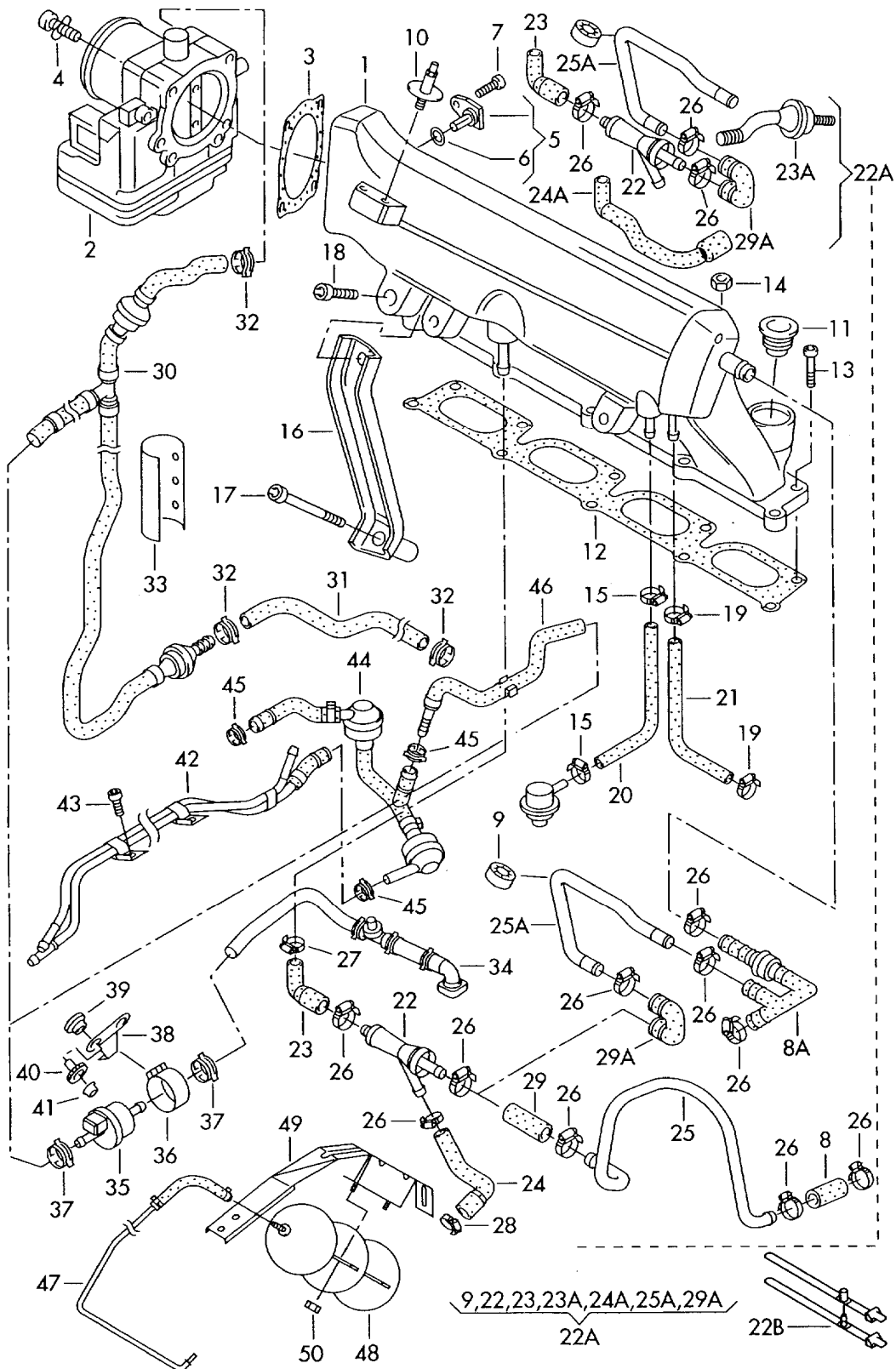




ETKA

Model	Year	MG	SG	Illustration	Restrictions	UPD	0:35	29.03.2015
A3	1997	1	33	133-029		58		





Audi

ETKA

Model	Year	MG	SG	Illustration	Restrictions	UPD	0:35	29.03.2015
A3	1997	1	33	133-029		58		

Pos	Part Number	Description	Remark	Qty	Model
		intake system throttle valve control element suction jet pump activated carbon filter system for vehicles with accelerator electronic module	1.8ltr.		AQA,AJQ,ARZ, APP,APY,AUM, AUQ,AUL
(1)	06A 133 201 CJ	intake manifold		1	AJQ,AQA,ARZ, APP
		also use:	N 014 703 6	1	
(1)	06A 133 201 CG	intake manifold		1	AUM,AUQ
		also use:	N 014 703 6	1	
(1)	06A 133 201 AT	intake manifold		1	APY,AUL
(2)	06A 133 062 C	throttle valve control element		1	
3	028 129 748	seal		1	
4	N 104 086 01	socket head bolt with inner multipoint head (combi)	M6X50	4	
5	058 905 379	temperature sensor		1	
6	095 323 969	o-ring	9X2	1	
7	N 101 621 01	socket head bolt with hexagon socket head	M6X15	1	
		only for:	06A 133 201 AR		
(7)	N 014 703 6	socket head bolt with hexagon socket head	M6X18	1	
		only for:	06A 133 201 CJ 06A 133 201 CG		
-	N 020 290 3	hose in coils of 5m 'order unit 5'	12X3,5	*	
8		shorten to:	50MM	1	automatic: AQA,AJQ,ARZ, APP
8A	06A 133 529 A	non-return valve		1	AUM,AUQ
9	06A 133 567 C	stop buffer		1	AUM,AUQ
11	06B 133 555 C	insert for injector		4	AJQ,AQA,APY, ARZ,APP,AUL
(11)	06B 133 555 D	insert for injector		4	AUM,AUQ
12	058 129 717 D	seal		1	
13	N 100 801 02	socket head bolt with hexagon socket head (combination)	M6X25	8	
14	N 011 006 24	hexagon nut	M6	2	
15	N 103 100 01	clamp	11, 9X7X0,6	2	



Audi

ETKA

Model	Year	MG	SG	Illustration	Restrictions	UPD	0:35	29.03.2015
A3	1997	1	33	133-029		58		

Pos	Part Number	Description	Remark	Qty	Model
16	06A 129 723 AC	support		1	AQA, AJQ, ARZ, APP, AUM, AUQ
(16)	06A 129 723 T	support		1	APY, AUL
17	N 102 382 02	socket head bolt with hexagon socket head (combination)	M10X60	1	AQA, AJQ, ARZ, APP, AUM, AUQ
(17)	N 909 450 01	hexagon socket head bolt with shoulder	M7X21,5-SP	1	APY, AUL
18	N 902 156 02	socket head bolt with hexagon socket head (combination)	M8X35-Z0	1	
-	N 101 965 02	hose in coils of 5m 'order unit 5'	4X3	*	
20		shorten to:	220MM	1	AQA, AJQ, ARZ, APP, AUM, AUQ
(20)		shorten to:	500MM	1	APY, AUL
21		see illustration:	133-30		AQA, AJQ, ARZ, APP, AUM, AUQ
(21)		see illustration:	133-32		APY, AUL
22	058 133 753 B	suction jet pump		1	AUM, AUQ; automatic: AQA, AJQ, ARZ, APP
23	06A 133 783 G	angled hose		1	AUM, AUQ; automatic: AQA, AJQ, ARZ, APP
24	06A 133 783 C	hose		1	automatic: AQA, AJQ, ARZ, APP
(24)	06A 133 783 H	connecting hose		1	AUM, AUQ
24A		see illustration:	103-85		
25	06A 133 782 B	connecting pipe	448,5MM	1	automatic: AQA, AJQ, ARZ, APP
25A	06A 133 782 D	connecting pipe		1	AUM, AUQ
26	N 102 019 01	clamp	22, 6X7X0, 60	6	AUM, AUQ; automatic: AQA, AJQ, ARZ, APP
27	N 102 555 01	clamp	17, 5X7X0, 6	1	AUM, AUQ; automatic: AQA, AJQ, ARZ, APP



Audi

ETKA

Model	Year	MG	SG	Illustration	Restrictions	UPD	0:35	29.03.2015
A3	1997	1	33	133-029		58		

Pos	Part Number	Description	Remark	Qty	Model
28	N 101 976 01	clamp	19,8X7X0,6	1	AUM,AUQ; automatic: AQA,AJQ,ARZ, APP
-	N 020 290 3	hose in coils of 5m 'order unit 5'	12X3,5	*	
29		shorten to:	50MM	1	automatic: AQA,AJQ,ARZ, APP
29A	06A 133 784 P	angled hose		1	AUM,AUQ
30	06A 133 781 H	connecting hose use if required:	06A 133 833	1 1	AQA,AJQ,ARZ, APP
(30)	06A 133 781 C	connecting hose F >> 8L-Y-066 000*		1	APY,AUL
30		see illustration: included in position: F 8L-Y-066 001>>*	121-37 17	1	APY,AUL
-	058 905 291	non-return valve		2	
-	N 906 867 01	spring band clamp	14X12	X	
31	06A 133 781 P	connecting hose		1	AQA,AJQ,ARZ, APP
(31)	06A 133 352 C	connecting hose		1	APY,AUL
32	N 906 867 01	spring band clamp	14X12	X	AQA,AJQ,ARZ, APP,APY,AUL
33	06A 133 833	heat insulation		1	AQA,AJQ,ARZ, APP
42	06A 133 500 C	connecting pipe		1	AUQ,AUM
43	N 014 740 4	socket head bolt with hexagon socket head	M6X16	2	AUQ,AUM
44	06A 133 517 B	connecting hose		1	AUQ,AUM
45	N 102 582 01	clamp	12-22X9X0,4	X	AUQ,AUM
46	1J0 133 366 Q	connecting hose		1	AUQ,AUM