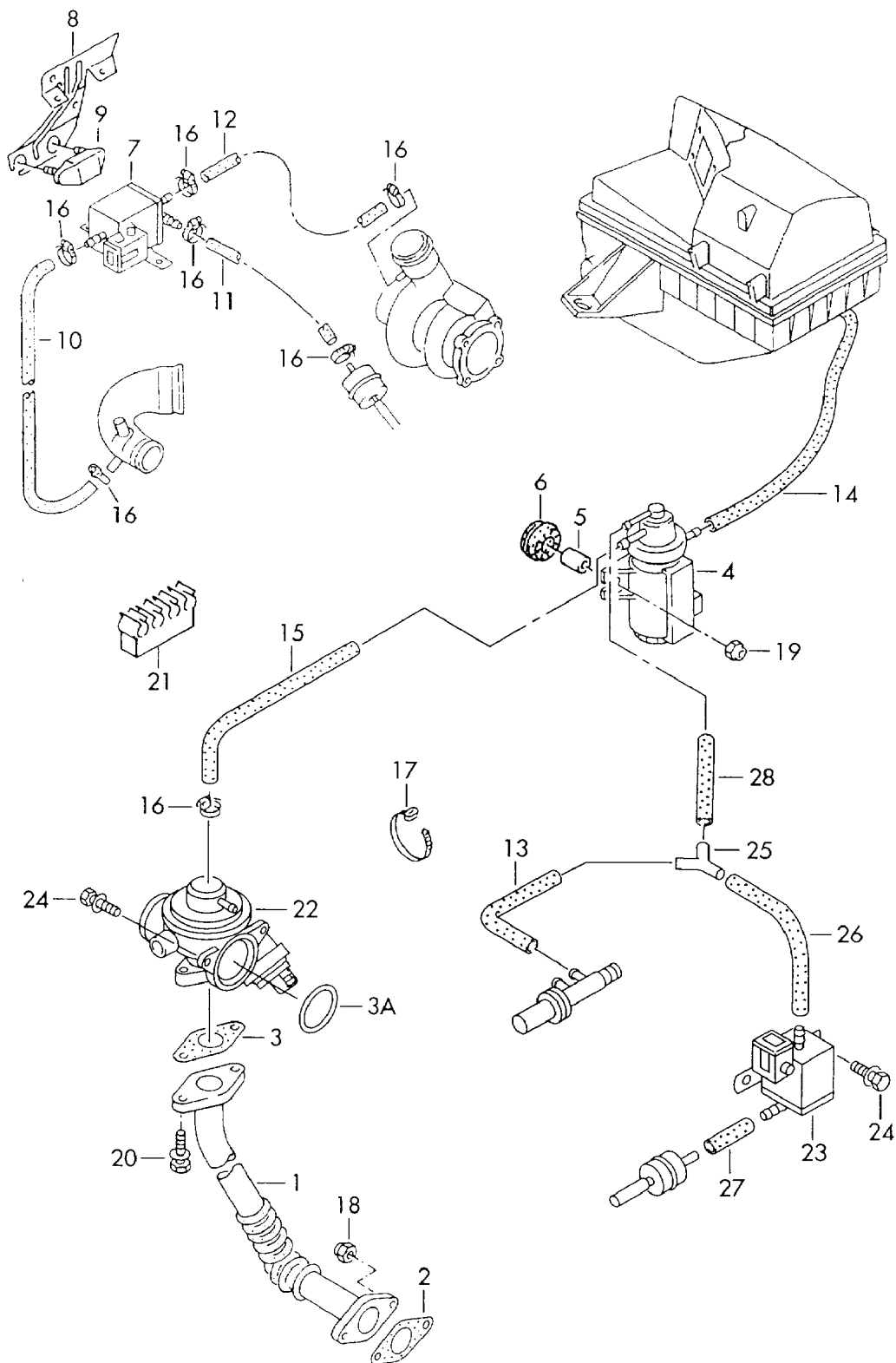




Audi

ETKA

Model	Year	MG	SG	Illustration	Restrictions	UPD	23:06	22.02.2015
A3	1997	1	31	131-10		928		





Audi

ETKA

Model	Year	MG	SG	Illustration	Restrictions	UPD	23:06	22.02.2015
A3	1997	1	31	131-10		928		

Pos	Part Number	Description	Remark	Qty	Model
		vacuum system exhaust gas recirculation	1.9ltr.		diesel eng.: AGR
1	038 131 521	connecting pipe		1	
2	038 131 547 A	seal	22MM	1	
3	069 131 547 D	seal	32MM	1	
3A	N 905 216 01	o-ring F 8L-V-110 000>>*	55.00X3.00-N	1	
4	1H0 906 627	pressure converter F >> 8L-X-200 000*		1	
(4)	1J0 906 627	pressure converter F 8L-Y-000 001>>		1	
5	052 129 734	distance piece		2	
6	046 131 887	grommet		2	
7	028 906 283 J	solenoid valve F >> 8L-X-200 000*		1	
(7)	028 906 283 N	solenoid valve F 8L-Y-000 001>>		1	
8	1J0 906 483 C	retaining plate		1	
9	06A 906 300	stop buffer		1	
-	N 020 291 1	hose in coils of 5m 'order unit 5'	3,5X3	*	
10		shorten to:	550MM	1	
11		shorten to:	1000MM	1	
12		shorten to:	1000MM	1	
13		shorten to:	350MM	1	
-	N 020 282 1	hose in coils of 5m 'order unit 5'	5X3	*	
14		shorten to:	370MM	1	
15		shorten to:	390MM	1	
16	N 024 528 1	clamp	8-12X8X0,4	X	
17	N 906 661 01	cable ties	4,6X200	X	
18	N 902 002 01	hexagon collar nut self-locking	M8	2	
19	N 901 063 02	hexagon collar nut	M6	2	
20	N 090 315 1	socket head bolt with hexagon socket head (combination)	M8X25	2	



Audi

ETKA

Model	Year	MG	SG	Illustration	Restrictions	UPD	23:06	22.02.2015
A3	1997	1	31	131-10		928		

Pos	Part Number	Description	Remark	Qty	Model
21	028 131 546 A	bracket	4 point	X	
(22)	045 131 501 C	exhaust recirculation valve F 8L-V-110 000>>*		1	
23	1J0 906 283 A	solenoid valve use if required: F 8L-V-110 000>>*8L-X-200 000*	038 131 529	1 1	
(23)	1J0 906 283 C	solenoid valve use if required: F 8L-Y-000 001>>	038 131 529	1 1	
-	038 131 529	retaining plate F 8L-V-110 000>>*		1	
24	N 101 154 02	socket head bolt with hexagon socket head (combination) F 8L-V-110 000>>*	M6X18	5	
25	056 129 971	y-piece F 8L-V-110 000>>*	4/4/4	1	
-	N 020 353 27	hose in coils of 5m 'order unit 5'	3,5X2	*	
26		shorten to: F 8L-V-110 000>>*	240MM	1	
27		shorten to: F 8L-V-110 000>>*	120MM	1	
28		shorten to: F 8L-V-110 000>>*	40MM	1	