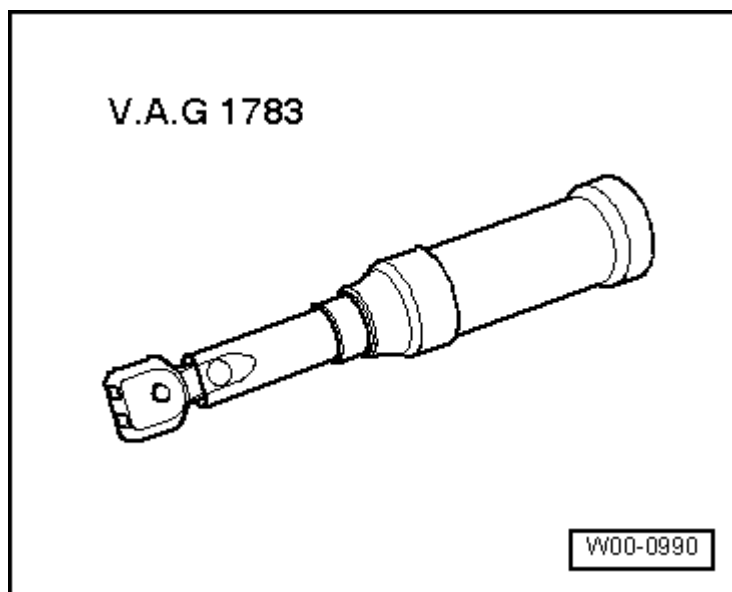


Removing and installing door trim (front)

Special tools and workshop equipment required

- ♦ Torque wrench -V.A.G 1783-

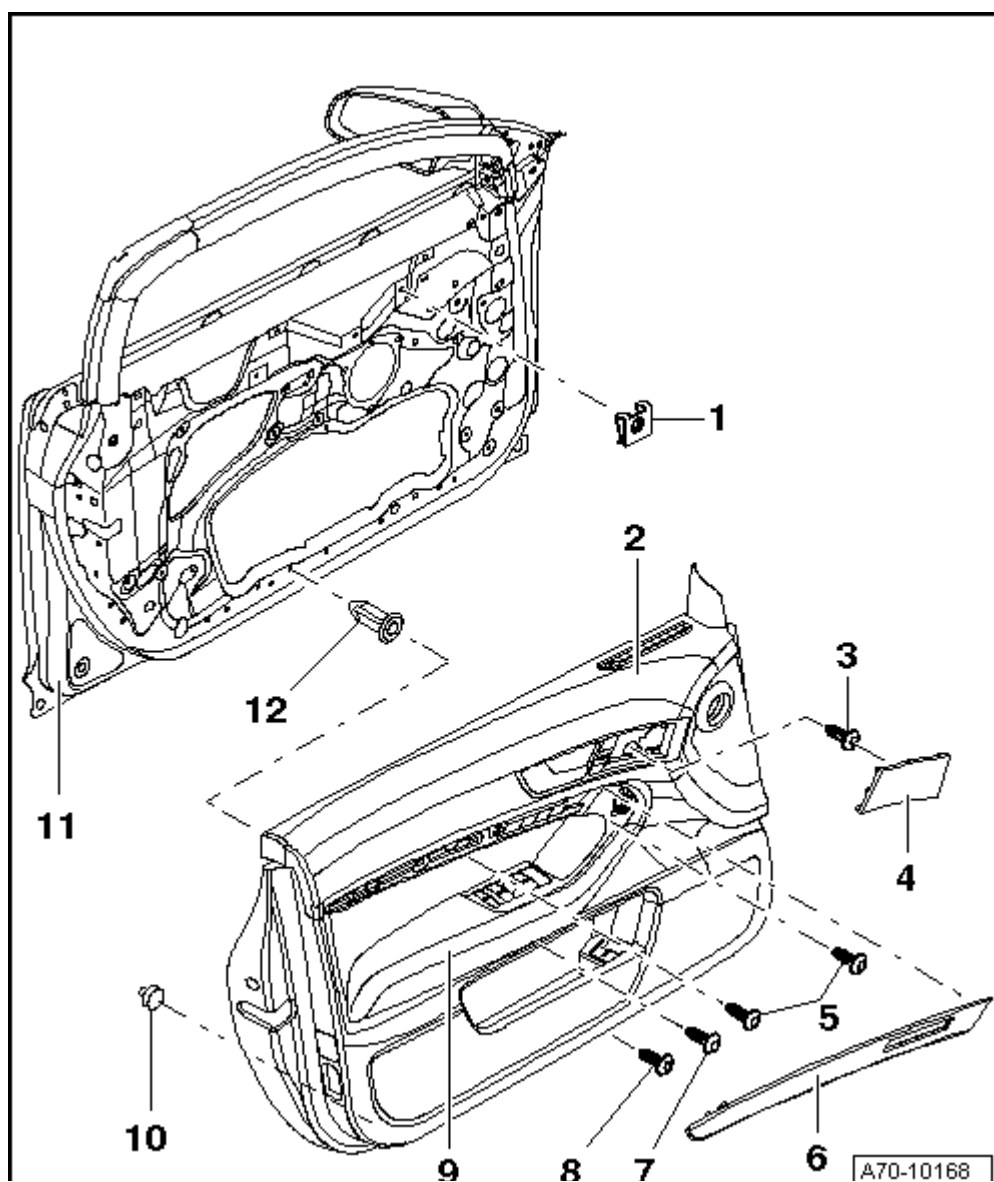


1 - Speed nuts
(4x)

2 - Door trim



Note



- ♦ *Only the door trim for vehicles without anti-theft alarm system is available as a replacement part. The opening for the ant-theft alarm system has to be cut out.*
- ♦ *Only the door trim for vehicles with standard sound system is available as a replacement part. For vehicles with BOSE sound system, trim for bass loudspeaker with BOSE emblem (→ Chapter „Removing and installing trim for bass loudspeaker“) and frame for bass reflex duct (→ Chapter „Removing and installing frame for bass reflex duct“) must be transferred. Opening for frame for bass reflex duct must also be made in frontal area of door trim → Chapter.*
- ♦ **Removing**
 - Unclip trim for treble loudspeaker -4-.
 - Remove trim panel -6- → Chapter.
 - Remove bolts -3- and -5- (2x).
 - Use a long screwdriver to remove bolt -7- on underside of armrest -9-.
 - Unscrew bolt -8- on underside of door trim -2-.
 - Unclip door trim -2- at bottom, starting from the outer side.
 - Lift door trim -2- approx. 20 cm out of door shell -11-.
 - Unplug connector to treble loudspeaker.
 - Detach Bowden cable for interior door handle → Fig..
 - Unplug connector at door control unit → Fig..

♦ **Installing**

Install in reverse order of removal. Note the following:

- Make sure the speed nuts -1- (4x) and expanding nuts -12- (4x) are clipped in securely.
- Make sure that retaining clips -10- (8x) are clipped into door trim. Renew any damaged clips → Fig.
- If renewing door trim for vehicle with anti-theft alarm system: cut out an opening along inner marking. Distance to outer marking: approx. 4 mm.
- For vehicles with BOSE sound system and requiring renewal of door trim: If necessary, make opening for frame for bass reflex duct → Chapter install new bass loudspeaker trim with BOSE emblem → Chapter „Removing and installing trim for bass loudspeaker“ and transfer frame for bass reflex duct → Chapter „Removing and installing frame for bass reflex duct“.



Caution

- ♦ ***On the Audi A6 Security, the door window will be damaged if the bolt -item 7- used is too long.***
- ♦ ***Always fit bolt -N 090 179 4- (16 mm).***

- Secure door trim with bolts -3, 5, 7, 8-.

3 - Bolt

- Tightening torque: 2 Nm

4 - Trim for treble loudspeaker

5 - Bolts (2x)

- Tightening torque: 2 Nm

6 - Trim panel

7 - Bolt

- Tightening torque: 2 Nm

**Caution**

- ♦ **On the Audi A6 Security, there is a risk of damaging the door window if the bolt used is too long.**
- ♦ **Always fit bolt -N 090 179 4- (16 mm).**

8 - Bolt

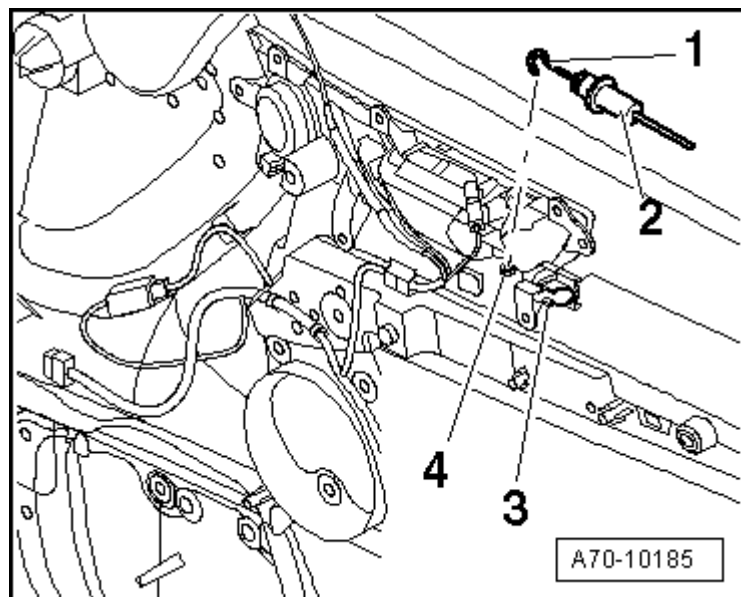
- Tightening torque: 2 Nm

9 - Armrest**10 - Retaining clips (8x)****11 - Door shell****12 - Expanding nuts (4x)****Disengaging Bowden cable**

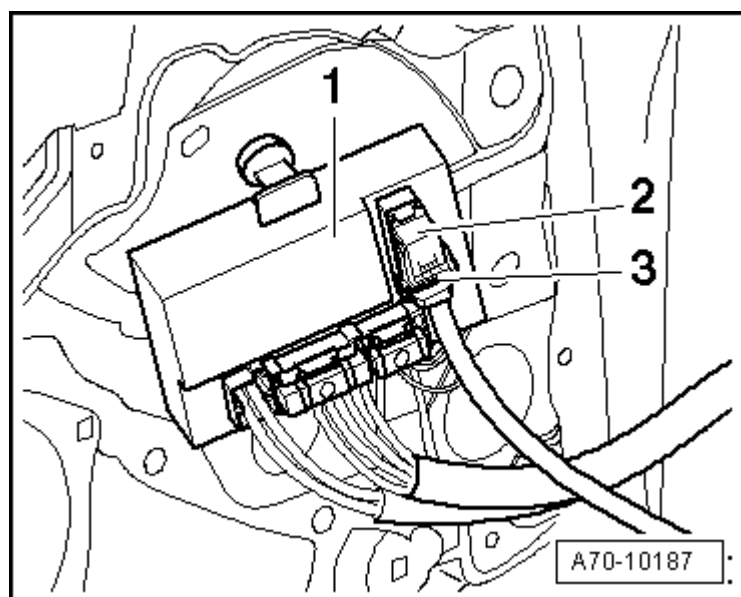
- Pull Bowden cable -2- out of guide -3-.
- Disengage hook -1- on Bowden cable from eye -4-.

**Note**

When installing, make sure hook -4- is facing downwards.

**Unplugging connector at door control unit**

- Unfasten retaining clip -3- and unplug connector -2- from door control unit -1-.

**Removing retaining clips in door trim**

–

Press retaining tab -2- and pull out fastener -1- in direction of arrow.

