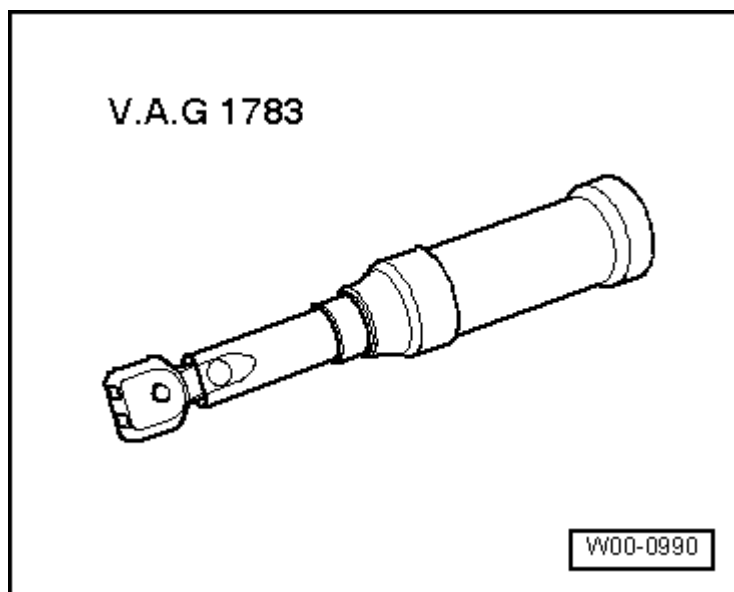


Removing and installing door trim (rear)

Special tools and workshop equipment required

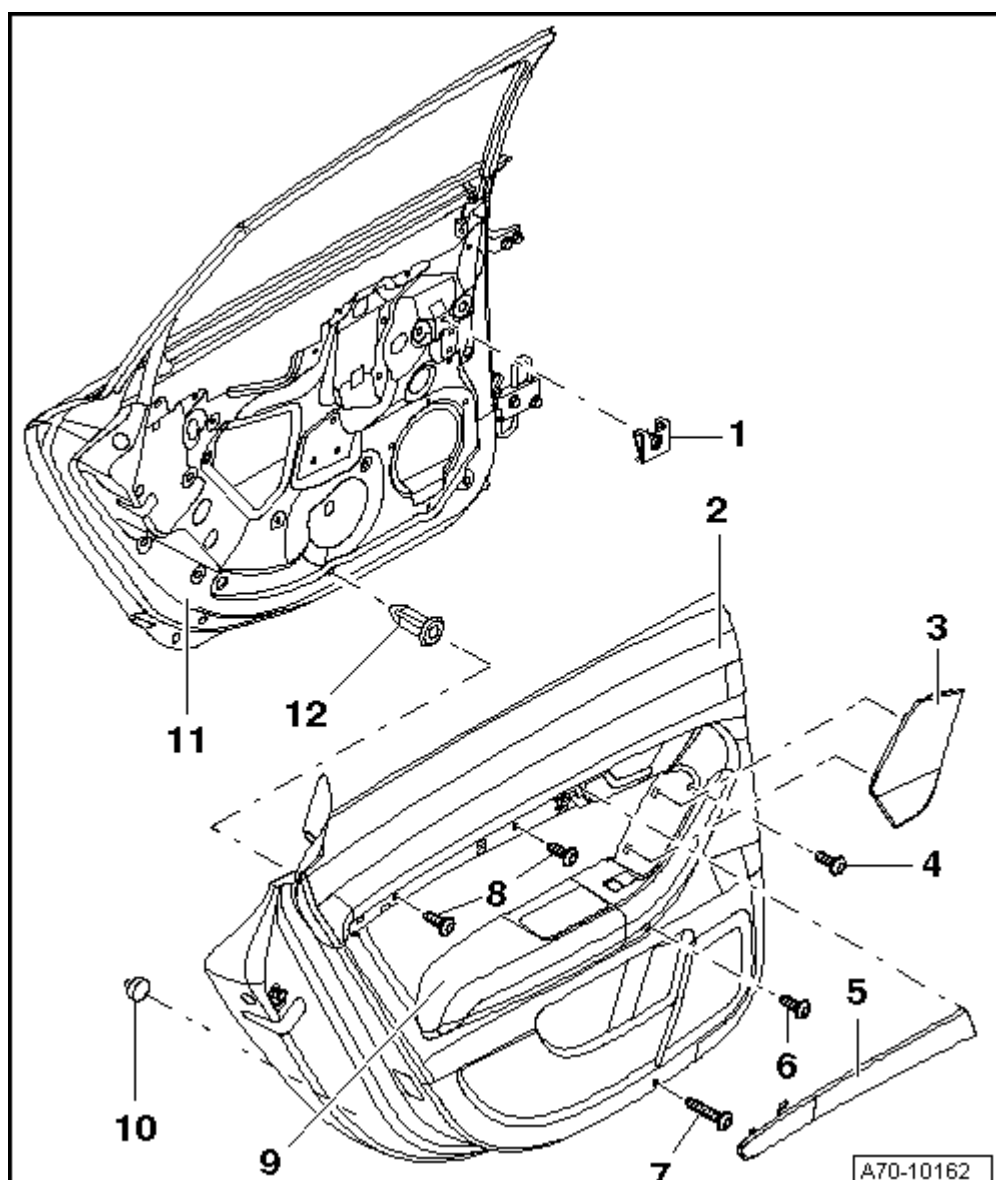
- ♦ Torque wrench -V.A.G 1783-



1 - Speed nuts
(4x)

2 - Door trim

- ♦ Removing



- Unclip trim for treble loudspeaker -3-.
- Remove trim panel -5- → **Chapter**.
- Remove bolts -4- and -8- (2x).
- Use a long screwdriver to remove bolt -6- on underside of armrest -9-.
- Unscrew bolt -7- on underside of door trim -2-.
- Unclip door trim -2- at bottom, starting from the outer side.
- Lift door trim -2- approx. 20 cm out of door shell -11-.
- Unplug connector on treble loudspeaker.
- Detach Bowden cable for interior door handle → **Fig.**.
- Unplug connector at door control unit → **Fig.**.

♦ **Installing**

Install in reverse order of removal. Note the following:

- Make sure the speed nuts -1- (4x) and expanding nuts -12- (4x) are clipped in securely.
- Make sure that retaining clips -10- (8x) are clipped into door trim. Renew any damaged fasteners → **Fig.**

3 - Trim for treble loudspeaker

4 - Bolt

- Tightening torque: 2 Nm

5 - Trim panel

6 - Bolt

- Tightening torque: 2 Nm

7 - Bolt

- Tightening torque: 2 Nm

8 - Bolts (2x)

- Tightening torque: 2 Nm

9 - Armrest

10 - Retaining clips (8x)

11 - Door shell

12 - Expanding nuts (4x)

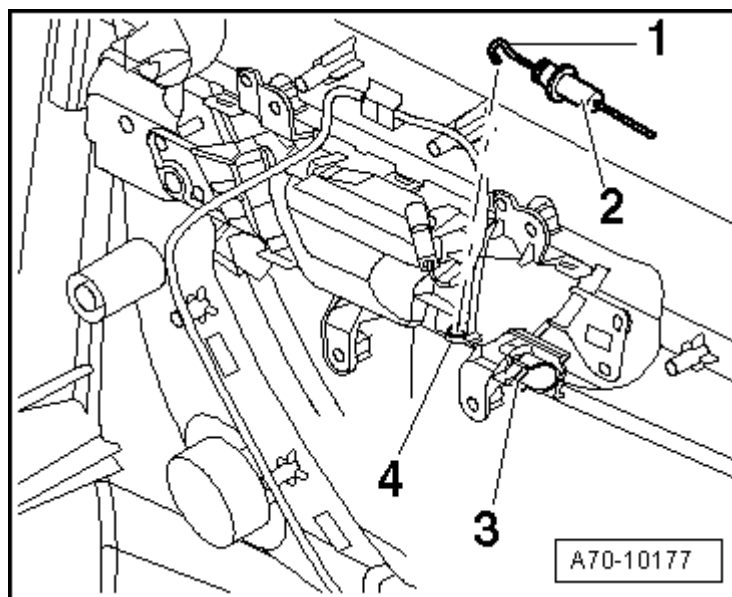
Disengaging Bowden cable

- Pull Bowden cable -2- out of guide -3-.
- Disengage hook -1- on Bowden cable from eye -4-.
- Unplug connector to treble loudspeaker.



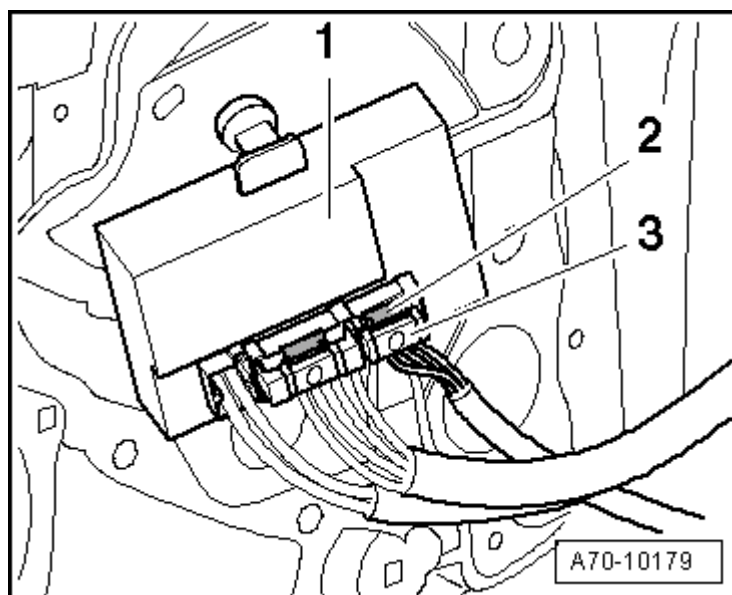
Note

When installing, make sure hook -4- is facing downwards.



Unplugging connector at door control unit

- Detach locking element -2- and unplug electrical connector -3- from control unit -1-.



Removing retaining clip in door trim

- Press retaining tab -2- and pull out fastener -1- in direction of arrow.

