

Exploded view - toothed belt for high-pressure pump, vehicles with engine codes BMK, BPP, BSG, BNG, ASB

1 - Toothed belt cover (front)

- Engage in position at the bottom at clip on at the side

2 - Nut

- Use counterhold tool -3036- when loosening and tightening → Fig.
- 70 Nm

3 - Damper weight

- Use counterhold tool -3036- when loosening and tightening central nut → Fig.

4 - Bolt

- 23 Nm

5 - Toothed belt sprocket for high-pressure pump

- Remove using puller -T40064- → Fig.

6 - Toothed belt tensioning roller

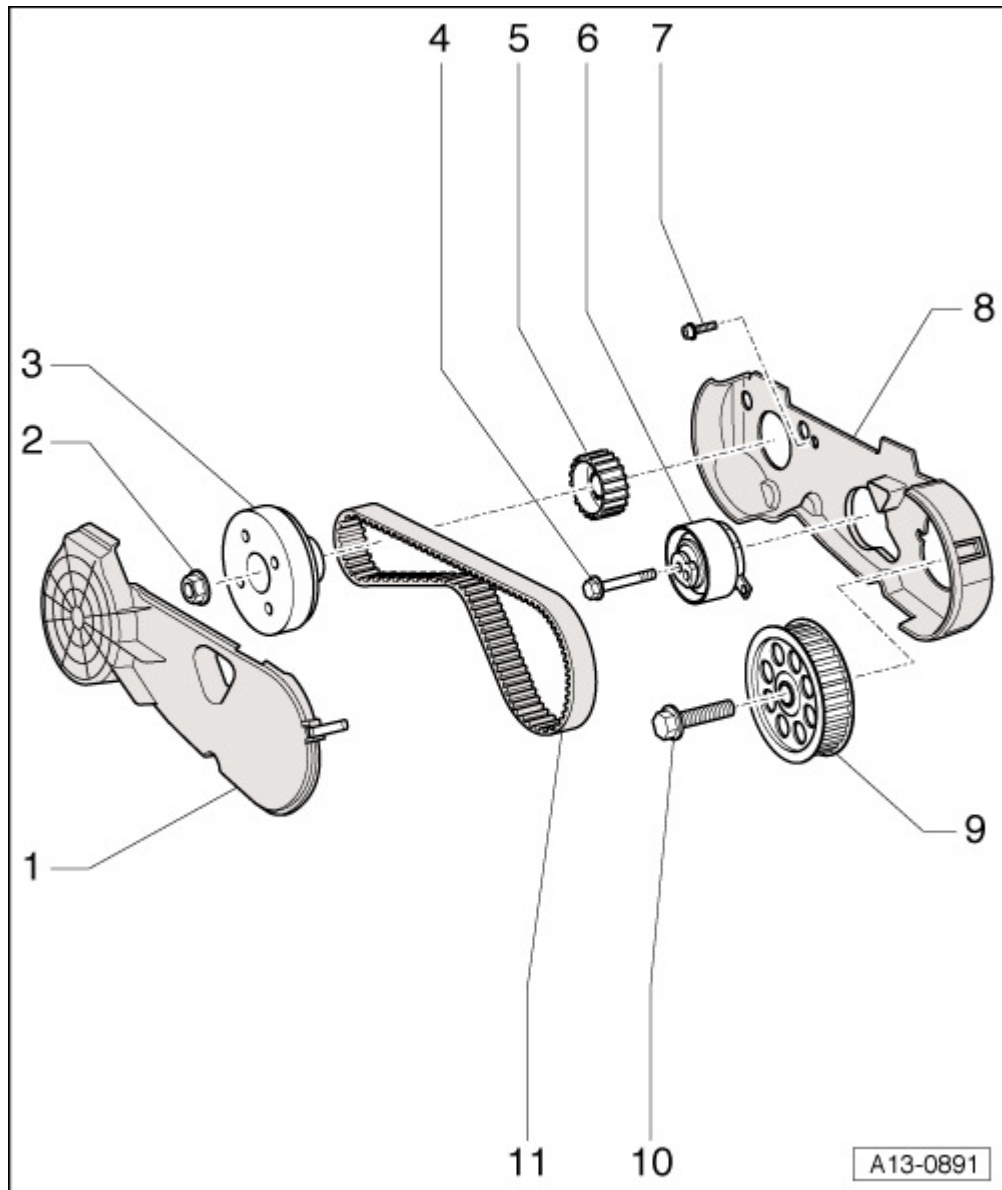
7 - Bolt

- 9 Nm

8 - Toothed belt cover (rear)

9 - Toothed belt drive sprocket

- Use counterhold tool -3036- when loosening and tightening central bolt → Fig.



- ❑ Pulling off: versions up to 12.2005 → Fig.; versions from 12.2005 onwards → Fig.

10 - Bolt

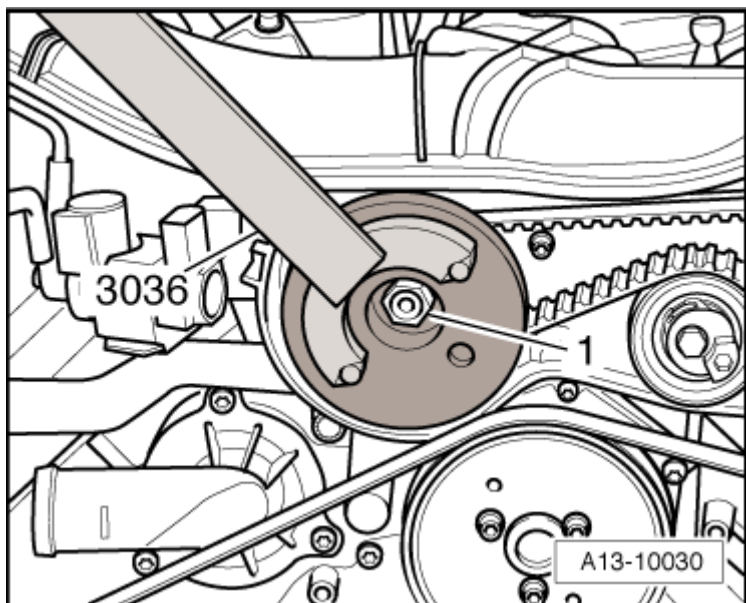
- ❑ 75 Nm
- ❑ With washer
- ❑ Use counterhold tool -3036- when loosening and tightening → Fig.

11 - Toothed belt for high-pressure pump

- ❑ Before removing, mark direction of rotation with chalk or felt-tip pen. If the belt runs in the opposite direction when it is refitted, this can cause breakage.
- ❑ Check for wear
- ❑ Removing and installing → Chapter

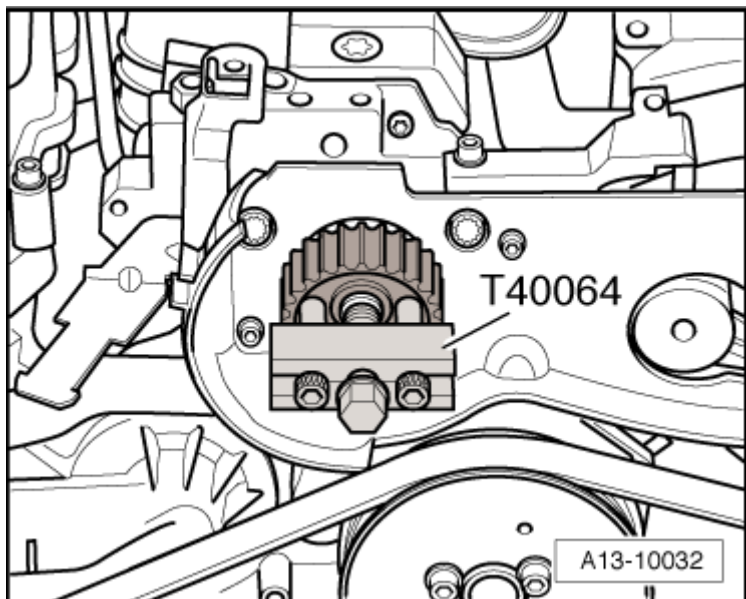
Loosening and tightening central nut for high-pressure pump shaft

- Use counterhold tool -3036- when loosening and tightening central nut -1-.



Pulling off toothed belt sprocket for high-pressure pump

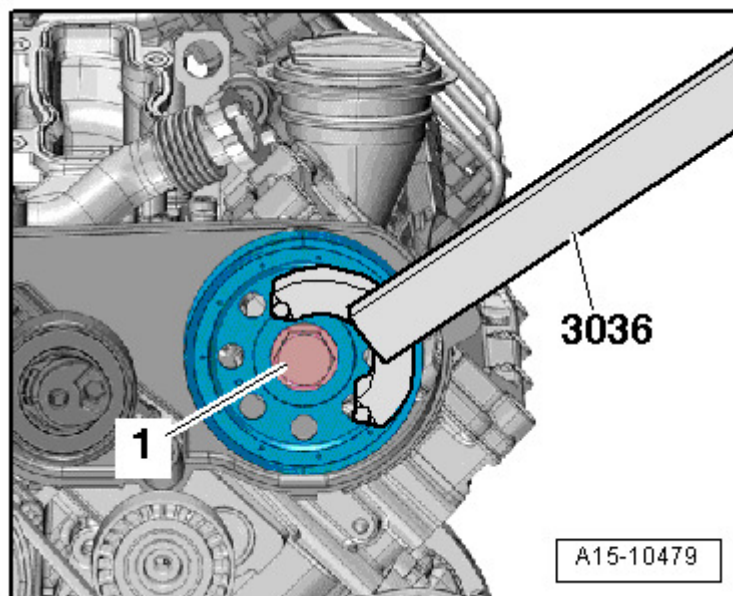
- Use puller -T40064- to pull off belt sprocket for high-pressure pump.



Loosening and tightening central bolt for toothed belt drive sprocket

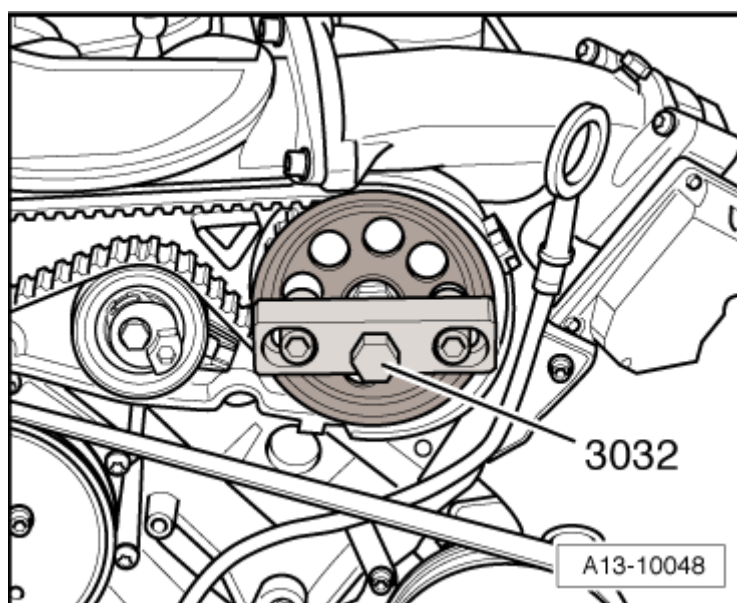
–

Use counterhold tool -3036- when loosening and tightening central bolt - 1-.



Pulling off toothed belt drive sprocket (versions up to 12.2005)

- Use puller -3032- to pull off toothed belt drive sprocket.



Pulling off toothed belt drive sprocket (versions from 12.2005 onwards)

- Use puller -T10320- to pull off toothed belt drive sprocket.

