

Service Manual

AUTOMOTIVE ELECTRONICS



AUDI CX-CA1270L

6-Disc CD Changer

PART No. : 4E0 035 111

VEHICLE : Audi A8

DESTINATION : All Countries

PRODUCED AFTER : Jan., 2002

Specification*

General

Power Supply	DC 12V (11V - 16V), Test Voltage 13.2V Negative Ground
Current Consumption	Less than 3.0A (at 0.5W)
Power Output	30W×4
Output Impedance	4Ω

AM Radio

Frequency Range	530 - 1,710kHz
Usable Sensitivity	24dB/μV (S/N 20dB)

FM Stereo Radio

Frequency Range	87.75 - 107.9MHz
Usable Sensitivity	7dB/μV (S/N 30dB)

IDC

Signal to Noise Ratio	More than 68dB (IHF-A)
Total Harmonic Distortion	Less than 0.4%
Channel Separation	65dB (IHF-A)

Dimensions** (W×H×D)	209×86×164mm
----------------------	--------------

Weight**	2.1kg
----------	-------

* Specifications and the design are subject to possible modification without notice due to improvements.

** Dimensions and Weight shown are approximate.

⚠ WARNING

This service information is designed for experienced repair technicians only and is not designed for use by the general public. It does not contain warnings or cautions to advise non-technical individuals of potential dangers in attempting to service a product. Products powered by electricity should be serviced or repaired only by experienced professional technicians. Any attempt to service or repair the product or products dealt with in this service information by anyone else could result in serious injury or death.

IMPORTANT SAFETY NOTICE

There are special components used in this equipment which are important for safety. These parts are marked by ⚠ in the Schematic Diagrams, Circuit Board Diagrams, Exploded Views and Replacement Parts List. It is essential that these critical parts should be replaced with manufacturer's specified parts to prevent shock, fire or other hazards. Do not modify the original design without permission of manufacturer.

CONTENTS

	Page		Page
1 FEATUERS	2	10 EXPLODED VIEW (Unit)	14
2 LASER PRODUCTS	2	11 CD CHANGER PARTS LIST	15
3 FRONT VIEW	3	12 EXPLODED VIEW (CD Deck-1)	18
4 REAR AND TOP VIEW	3	13 EXPLODED VIEW (CD Deck-2)	19
5 WIRING CONNECTIONS	4	14 EXPLODED VIEW (CD Deck-3)	20
6 BLOCK DIAGRAM	5	15 WIRING DIAGRAM	21
7 TERMINALS DESCRIPTION	7	16 SCHEMATIC DIAGRAM-1	26
8 PACKAGE AND IC BLOCK DIAGRAM	9	17 SCHEMATIC DIAGRAM-2	29
9 REPLACEMENT PARTS LIST	11		

1 FEATUERS

- PLL (Phase Locked Loop) synthesized tuning.
- 18-station preset (12-FM, 6-AM).
- 6-Disc CD changer (in dash board).
- Adjustable VOL, BAS, TRE, FAD and BAL.
- GA-NET BUS.

2 LASER PRODUCTS

Do not take apart this unit or attempt to make any changes yourself.

This unit is very intricate that uses a laser pickup to retrieve information from the surface of compact discs. The laser is carefully shielded so that its rays remain inside the cabinet. Therefore, never try to disassemble the player or alter any of its parts since you may be exposed to laser rays and dangerous voltages.

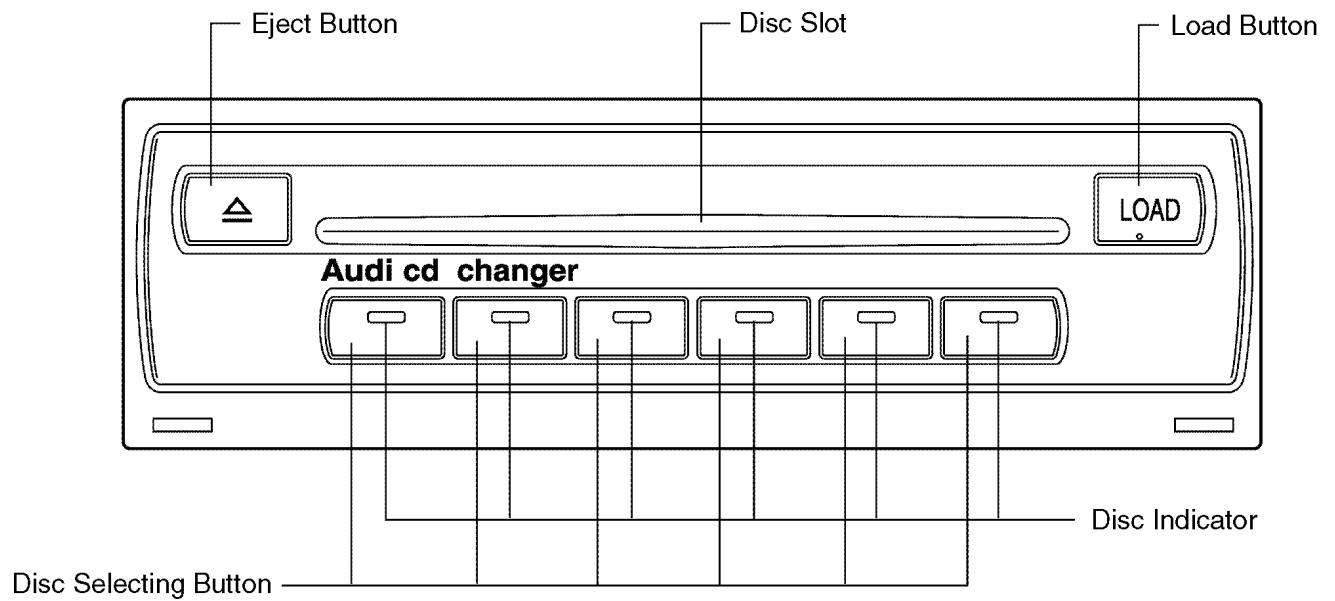
Laser products :

Wave length	780nm
Laser power	No hazardous radiation is emitted with safety protection.

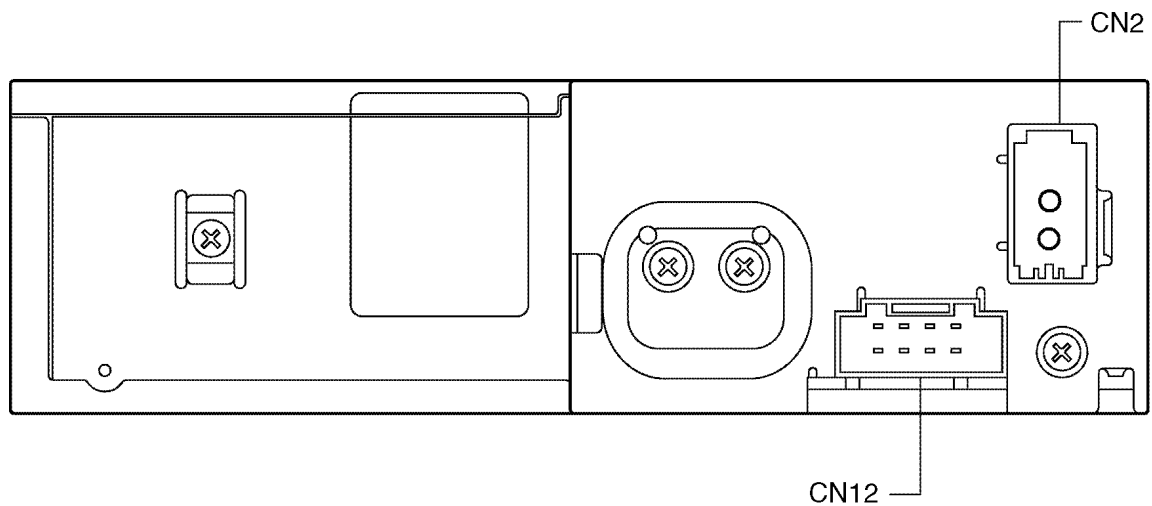
Caution

This product utilizes a laser. Use of controls or adjustments or performance of procedures other than those specified herein may result in hazardous radiation exposure.

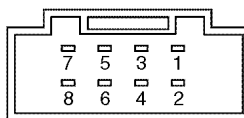
3 FRONT VIEW



4 REAR AND TOP VIEW

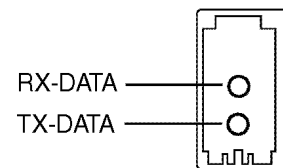


CN12 8P CONNECTOR

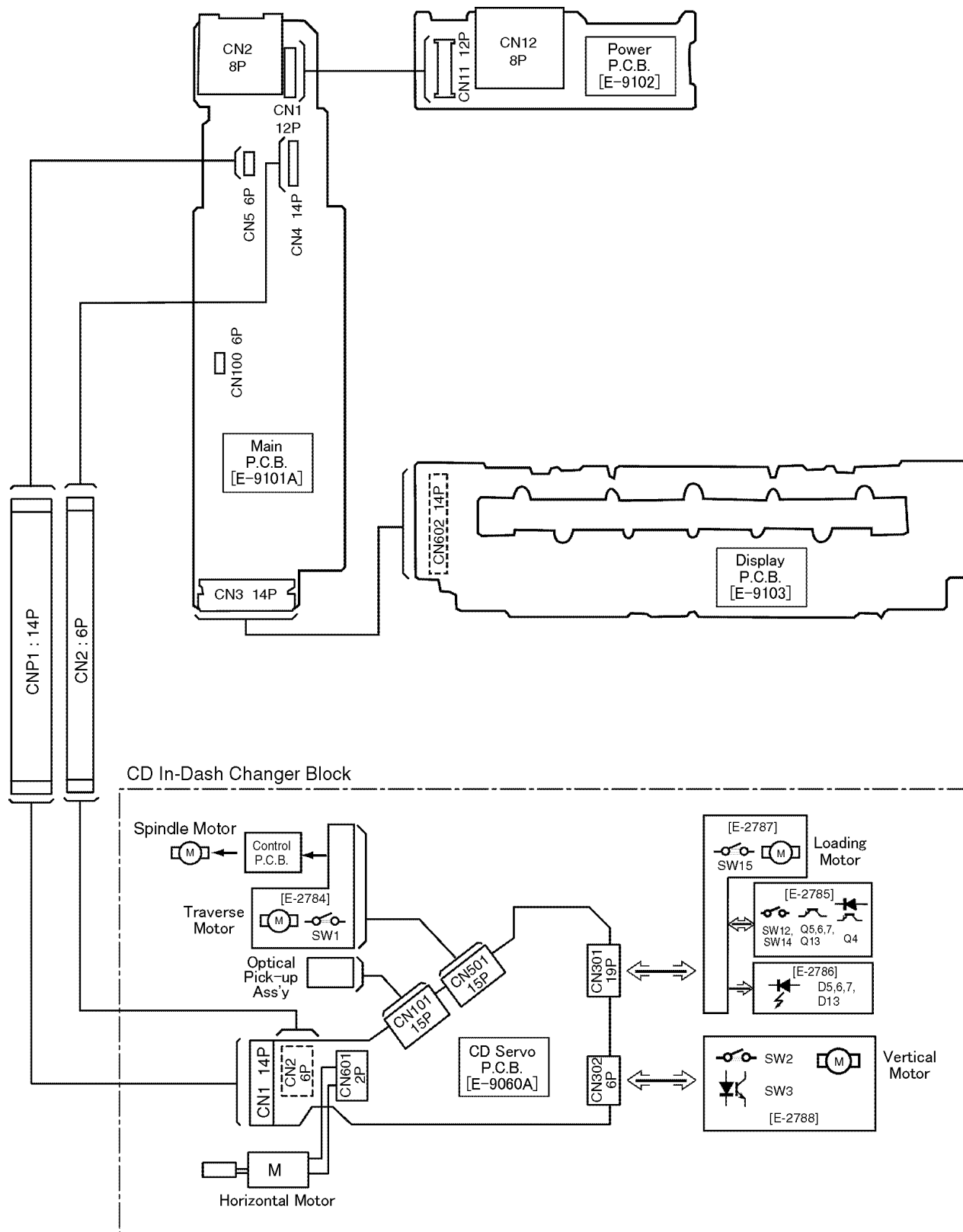


1. Ground
2. Power Supply +B
3. ID1
4. ID2
5. DIAG
6. No Connection
7. No Connection
8. No Connection

CN2
OPTICAL COMMUNICATION
CONNECTOR



5 WIRING CONNECTIONS

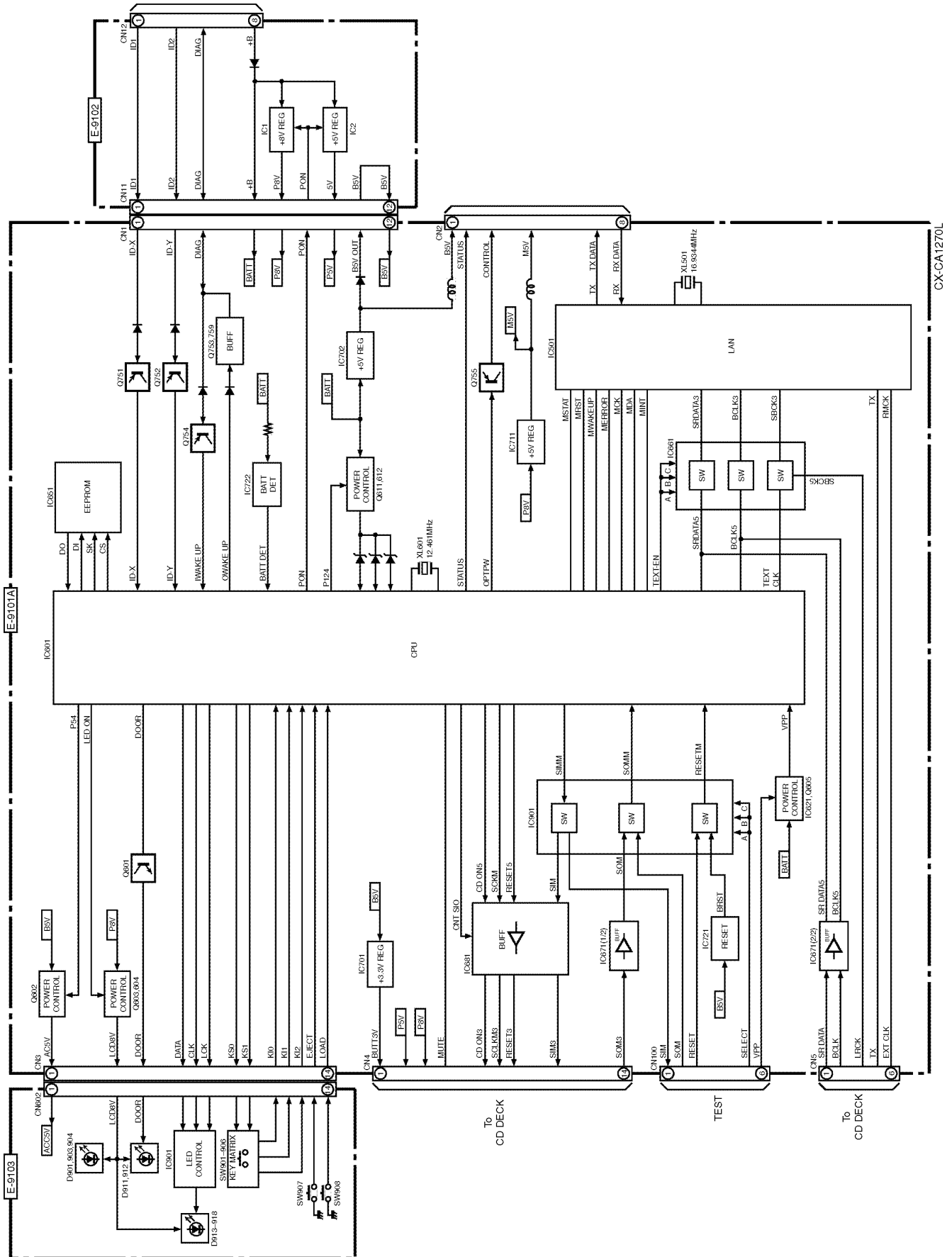


<Note> :

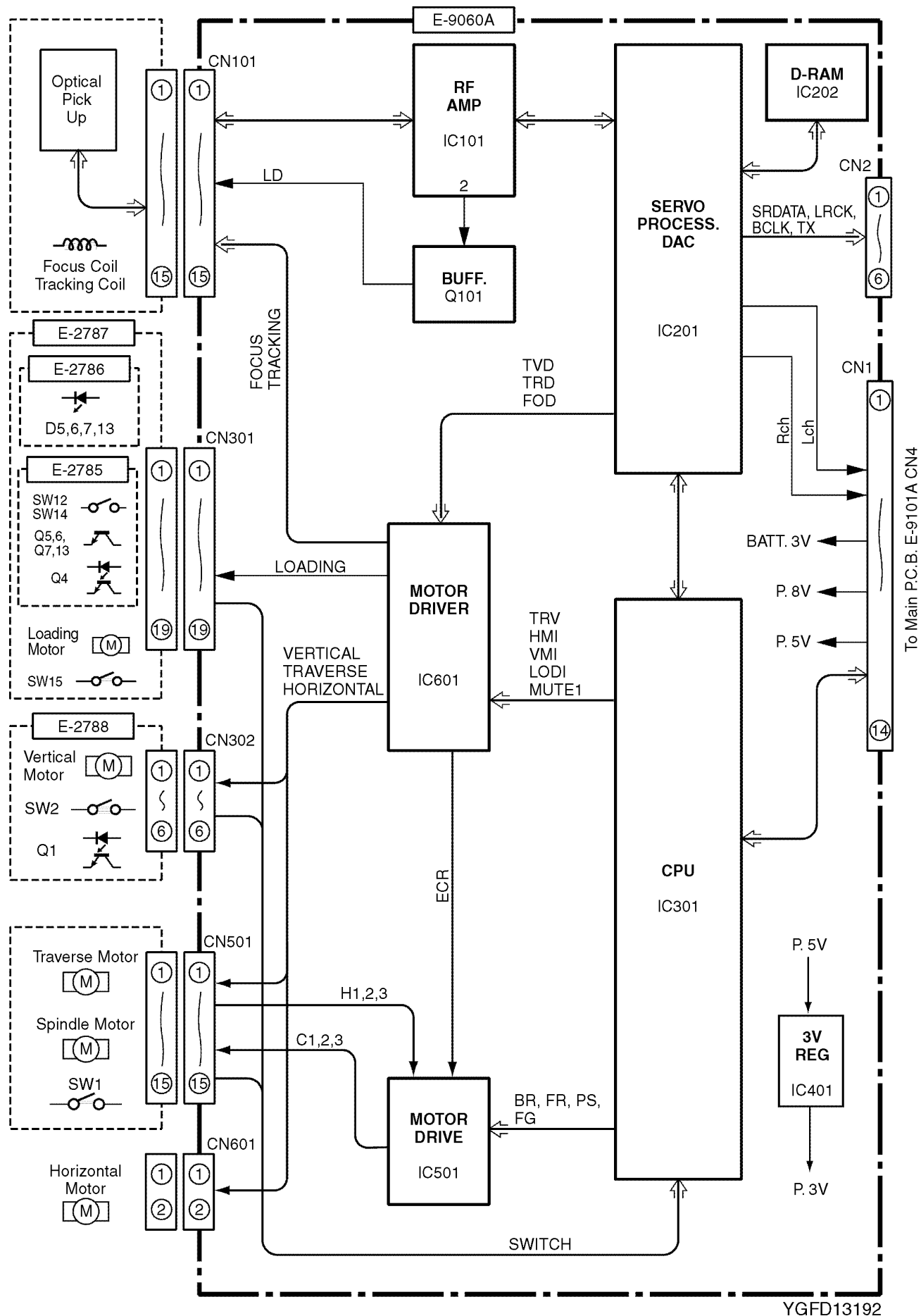
-This mark shows a Ref. No. of connector
-This mark shows a mounting position of connector.

6 BLOCK DIAGRAM

6.1. Main/Power/Display Block



6.2. CD Servo Block



7 TERMINALS DESCRIPTION

7.1. Main Block

IC601 : C2CBKH000010

Pin No.	Port	Descriptions	I/O	Vol (V)
1	P120	Security ROM Select	O	0
2	P121	Security data shift clock	O	0
3	P122	Security data output	O	0
4	P123	Security data input	I	0
5	P124	Battery level detection control	O	4.9
6-8	-	No connection	-	-
9	VDD	+5V digital power supply	-	4.9
10	X2	Crystal ocillator	-	3.1
11	X1	Crystal ocillator	-	2.5
12	VSS	Digital ground	-	0
13	XT2	Not used	-	-
14	XT1	(Connecting to Ground)	-	0
15	RESET	Reset	I	4.9
16	M INT	Interrupt input	I	5.1
17	BATT-DET	Battery level detection	I	4.8
18	IWAKEUP	Wake-up signal input	I	0
19	EJECT	Eject switch	I	4.9
20	BCLK5	Shift clock for optical comm. LSI	O	2.8
21	MAGA_IN	Load switch	I	4.9
22	STATUS	Status signal	O	0
23	AVDD	+5V analog power supply	-	4.8
24	AVREF	+5V analog power supply	-	4.8
25	7V_DET	Battery level (7V) detection	I	4.3
26	1V_DET	Battery level (1V) detection	I	1.0
27	GND	Ground	-	3.9
28-32	GND	(Connecting to Ground)	-	0
33	AVSS	Analog ground	-	0
34	RX_RST	Optical comm. Receiver reset	O	0
35	NC	No connection	-	-
36	VDD	+5V digital power supply	-	4.8
37	SRDATA5	Serial data for optical comm. LSI	O	0
38	NC	No connection	-	-
39	TEXTCLK	Sub clock	O	4.8
40	SOMM	Serial data	I	2.9
41	SIMM	Serial data	O	0
42	SCKM	Shift clock	O	4.8
43	CNT_SI0	Buffer gate on/off	O	4.8
44	NC	No connection	-	-
45	MDA	I/F data	-	4.6
46	MRST	Reset	O	4.8
47	MCK	I/F data shift clock	O	5.0
48	MUTE	Mute control	O	0
49	TEXT_EN	TEXT clock enable	O	0
50	RX_ON	Optical comm. Receiver power control	O	0
51	NC	No connection	-	-
52-55	NC	No connection	-	-
56	CDON5	CD power on	O	4.9
57	RESET5	CD reset	O	4.9
58	DATA	LCD data	O	0.5
59	CLK	LCD data shift clock	O	0.5
60	LCK	LCD data load clock	O	0
61	OPTPW	Optical comm. controller power on/off	O	0
62	KS1	Key strobe	O	0
63	KS0	Key strobe	O	0
64	KI2	Key data input	I	0
64	KI1	Key data input	I	0
66	KI0	Key data input	I	4.9

Pin No.	Port	Descriptions	I/O	Vol (V)
67	DOOR	Door illumination on/off	O	0
68	P54	ACC 5V power control	O	4.8
69	PON	System power control	O	4.9
70	MON	Not used	-	-
71	MWAKEUP	IC501 wake-up	O	0
72	VSS	Ground	-	0
73	OWAKEUP	wake-up signal output	O	0
74-76	-	No connection	-	-
77	MERROR	IC501 error signal	I	0
78	MSTAT	IC501 status signal	I	0
79,80	NC	No connection	-	-
81	VDD	+5V digital power supply	-	4.9
82	LED_ON	LCD power control	O	4.8
83-85	NC	No connection	-	-
86	MODE1	Not used	-	-
87	MODE2	Not used	-	-
88	DIAG1	Diag. signal input	I	0
89	DIAG2	Diag. signal input	I	0
90-92	NC	No connection	-	-
93	F_WRITE	ROM data write control	O	0
94	VPP	ROM write power supply	-	0
95-100	NC	No connection	-	-

7.2. CD Servo Block

IC201 : MN662785TBUC

Pin No.	Port	Descriptions	I/O	Vol (V)
1	DVDD3	+5V power supply	-	3.6
2	D0	D-RAM data	I/O	2.0
3	D1	D-RAM data	I/O	2.0
4	NWE	D-RAM data write	O	3.0
5	NRAS	D-RAM row address strobe	O	3.2
6	D2	D-RAM data	I/O	2.1
7	D3	D-RAM data	I/O	1.9
8	NCAS0	D-RAM column address strobe	O	2.8
9	NCAS1	D-RAM column address strobe	O	1.4
10	A8	D-RAM address	O	1.0
11-14	A7-4	D-RAM address	O	1.1
15	A9	D-RAM address	O	1.1
16-18	A0-A2	D-RAM address	O	1.1
19	A3	D-RAM address	O	1.1
20	DVSS2	Ground	-	0
21	DVDD2	+5V power supply	-	3.6
22	SPOUT	Not used	-	1.5
23	TRVP	Traverse motor control	O	1.9
24	TRVM	Traverse motor control	O	1.9
25	TRP	Tracking coil drive	O	1.9
26	TRM	Tracking coil drive	O	1.9
27	FDP	Focus coil drive	O	2.0
28	FDM	Focus coil drive	O	2.0
29	FBAL	Focus balance	O	1.9
30	TBAL	Tracking balance	O	1.9
31	CSEL	(Connecting to VDD)	-	3.6
32	FE	Focus error	I	2.0
33	TE	Tracking error	I	1.9
34	RFENV	RF envelope	I	1.9
35	OFT	Off track signal	I	0
36	NRFDET	RF detecting signal	I	0
37	BDO	Drop-out signal	I	0
38	LDON	Laser on signal	O	3.6
39	ARF	RF signal	I	1.9
40	IREF	Reference current input	I	1.2
41	ADPVCC	(Connecting to ground)	-	0
42	DSL F	Loop filter for DSL	-	2.0
43	DRF	Loop filter for DSL	-	2.2
44	PLLF	Loop filter for PLL	-	1.3
45	VCOF	VCO filter	-	1.3
46	AVDD2	+5V power supply	-	3.6
47	AVSS2	Ground	-	0
48	OUTL	L channel output	O	1.8
49	AVSS1	Ground	-	0
50	OUTR	R channel output	O	1.8
51	AVDD1	+5V power supply	-	3.5
52	FSEL	(Connecting to P3V)	-	3.7
53,54	-	(Connecting to ground)	-	0
55	FLAG	Flag output	O	0
56	CLVS	Servo status signal	O	3.6
57-60	-	Not used	-	-
61	MCLK	Clock for I/F command	I	2.4
62	MDATA	Data for I/F command	I	1.9
63	MLD	I/F command load	I	3.5
64	BLKCK	Subcode block clock	O	0
65	SQCK	Ext. clock for sub code-Q	I	3.5
66	SUBQ	Code for sub. code-Q	O	1.1
67	DMUTE	Mute input	I	0
68	STAT	Status signal	O	1.1
69	NRST	Reset input	I	3.6
70	SPPOL	Not used	-	-
71	PMCK	Clock output	O	2.0
72	SMCK	Clock output	O	1.9
73	SDATA	Serial data	O	0
74	LRCK	LR clock	O	0
75	BCLK	Bit clock	O	0
76	/TEST	(Connecting to VDD)	-	1.5
77	X1	Crystal oscillator	-	1.8
78	X2	Crystal oscillator	-	1.8

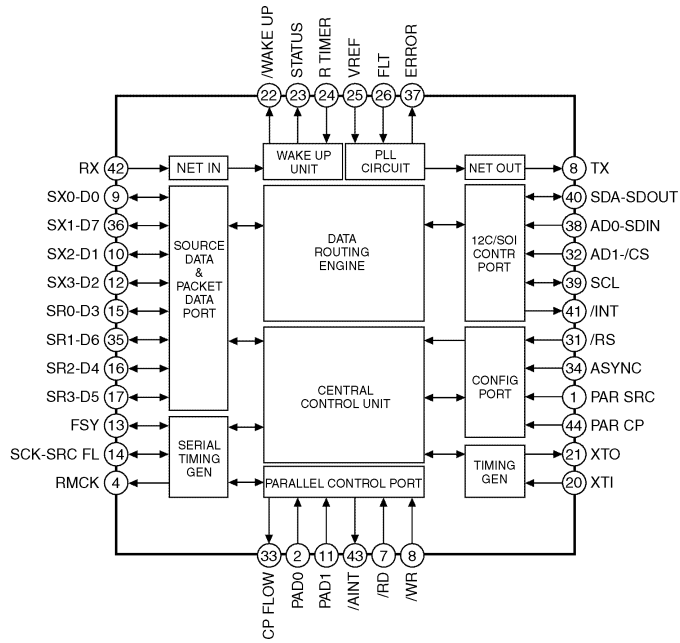
Pin No.	Port	Descriptions	I/O	Vol (V)
79	DVDD1	+5V power supply	-	3.6
80	DVSS1	Ground	-	0

IC301 : C2BBGF000364

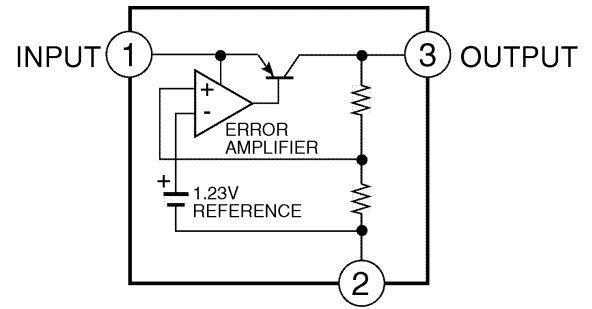
Pin No.	Port	Descriptions	I/O	Vol (V)
1	PS	Motor power save	O	3.5
2	BR	Brake mode selection	O	0
3	GCTL	Motor G-control	O	1.6
4	SPCCTL	Motor speed control	O	3.5
5	-	Not used	-	-
6	MCLK	Clock for I/F command	O	2.9
7	MDATA	Data for I/F command	O	1.9
8	MLD	I/F command load	O	3.5
9	VSS0	Ground	-	0
10	VDD0	+3V power supply	-	3.5
11	STAT	Status signal	I	1.2
12	FLOCK	Focus servo lock	O	0
13	TLOCK	Tracking servo lock	O	0
14	SENS	Servo status	O	0
15	SIM	CD changer serial data	I	3.1
16	SOM	CD changer serial data	O	2.2
17	SCKM	Serial data shift clock	I	3.2
18	SUBQ	Code for sub. code-Q	I	1.7
19	-	Not used	-	-
20	SQCK	Ext. clock for sub. code-Q	O	3.6
21	NRST	Reset output	O	3.6
22	DMUTE	Mute output	O	0
23	MUTE	Mute output	O	0
24	VDD1	+3V power supply	-	3.5
25	AVSS1	Ground	-	0
26	SW15	Feeder SW	I	3.6
27	SW3	Tray H SW	I	3.5
28	SW4	Disc push SW	I	0.5
29	SW5	Disc SW	I	0
30	SW6	Disc load SW	I	0
31	SW7	Eject SW	I	0
32	SW13	Eject2 SW	I	0
33	CLVS	Servo status	O	3.6
34	AVREF	+3V power supply	-	3.6
35	-	Not used	-	-
36	/RESET	Reset	I	3.6
37	XT2	Not used	-	-
38	XT1	(VDD pull-up)	-	3.6
39	IC(VPP)	(Connecting to ground)	-	0
40	X2	Crystal Oscillator	-	2.1
41	X1	Crystal Oscillator	-	1.8
42	VSS1	Ground	-	0
43	CDON	CD changer start/stop	I	3.1
44	BLKCK	Sub. code block clock	I	0
45	FG	Flag signal	I	1.9
46	BDO	Drop-out signal	I	0
47	FR	Revolution detection	I	0
48	TRV	Forced traverse control	O	1.9
49	PWM	Not used	-	-
50	VMI+	Horizontal motor control	O	0
51	VMI-	Horizontal motor control	O	0
52	MUTE1	Mute output	O	3.6
53	LODI+	Loading motor control	O	0
54	LODI-	Loading motor control	O	0
55	HMI+	Vertical motor control	O	0
56	HMI-	Vertical motor control	O	0
57	SW1	Inner SW	I	3.6
58	SW2	TrayG SW	I	0
59	SW8	Play SW	I	0
60	SW9	Clump SW	I	3.6
61	SW10	Shutter SW	I	3.6
62	SW11	Horizontal origin SW	I	3.6
63	SW12	Outer2 SW	I	3.7
64	SW14	Outer SW	I	3.6

8 PACKAGE AND IC BLOCK DIAGRAM

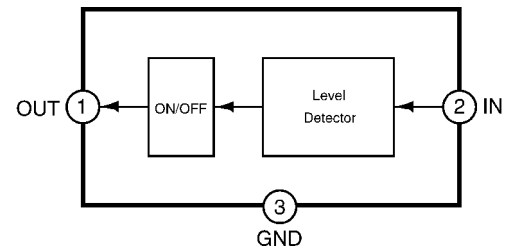
8.1. Main Block



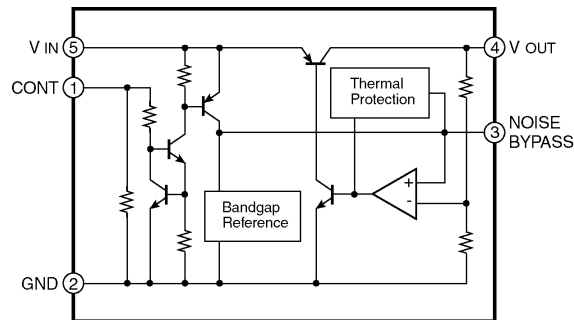
IC501 : C1EB00000047



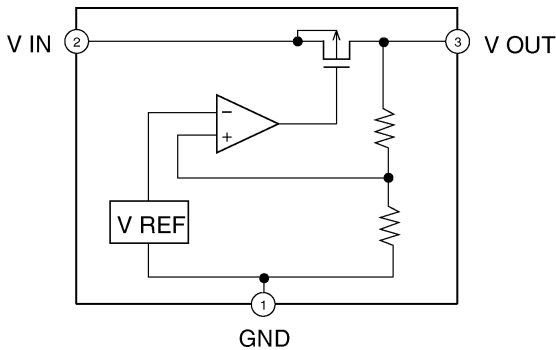
IC702 : LP2950CDT



IC721 : MN1382QPIC

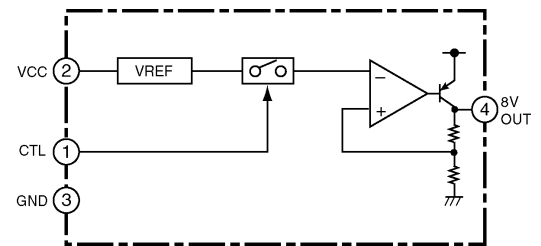


IC621 : C0CBAJC00006



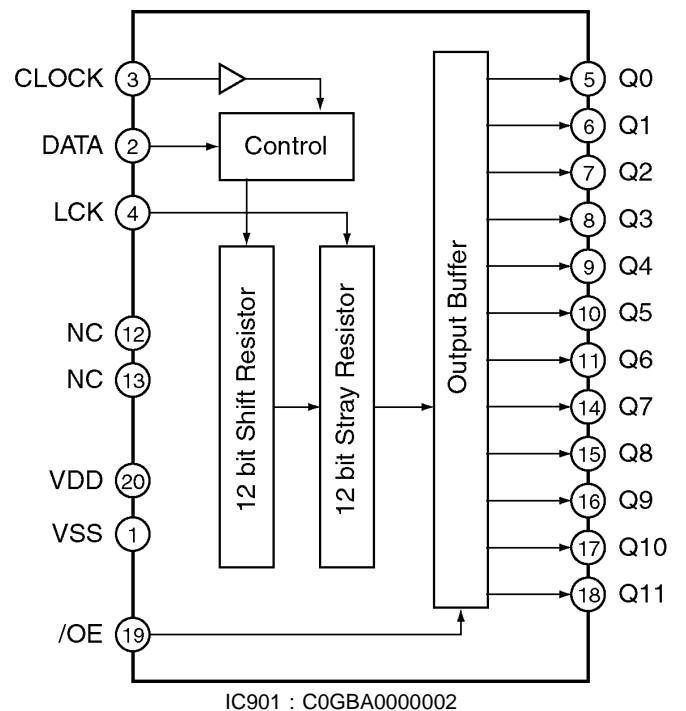
IC701 : C0CBABC00039

8.2. Power Block

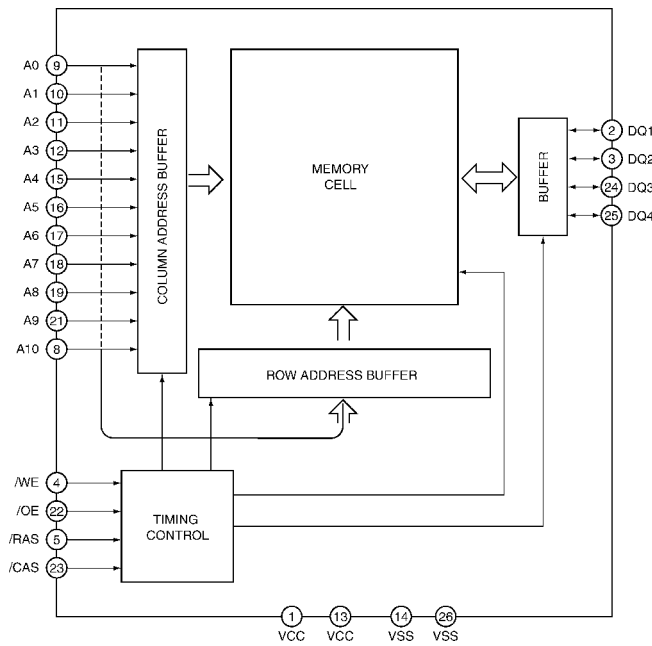


IC1 : C0DAZHG00001

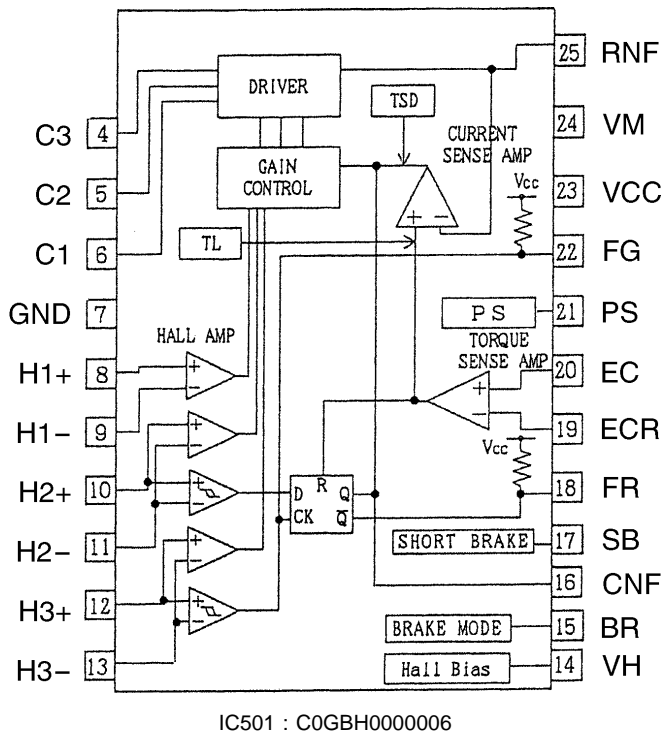
8.3. Display Block



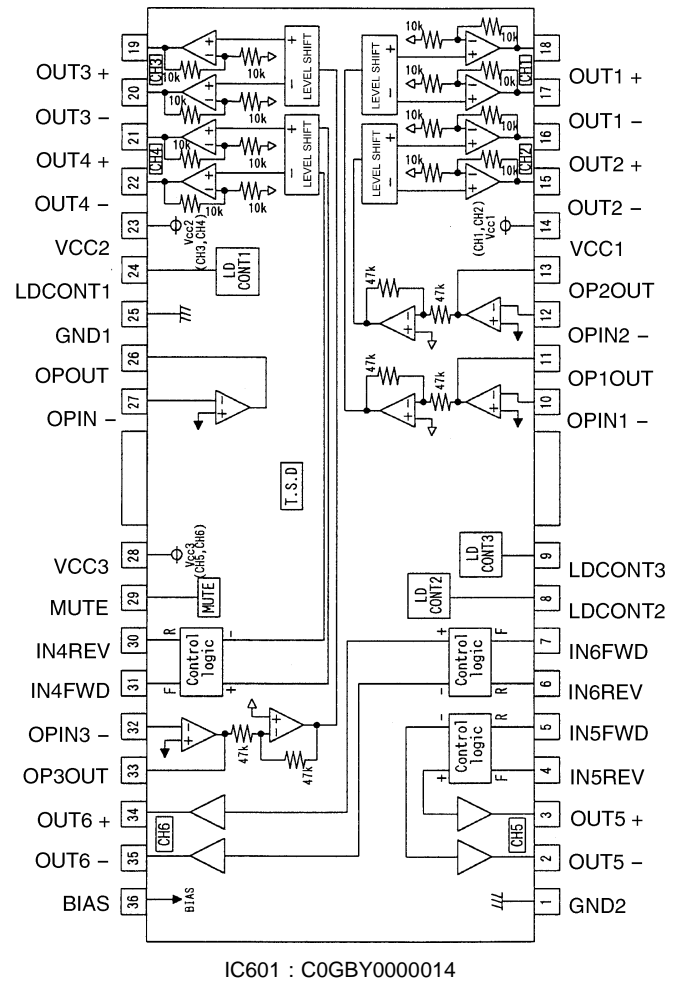
8.4. CD Servo Block



IC202 : C3ABMB000009



IC501 : C0GBH0000006



IC601 : C0GBY0000014

9 REPLACEMENT PARTS LIST

Notes :

1. Be sure to make your orders of replacement parts according to this list.
2. Important safety notice: Components, identified by Δ mark have special characteristics important for safety. When replacing any of these components, use only manufacturer's specified parts.
3. Location keys in the remarks column indicates the general location of the parts shown in the exploded drawing, as in a road map.
4. The marking (RTL) indicates that Retention Time is limited for this item. After the discontinuation of assembly in production, the item will continue to be available for a specific period of time. The retention period of availability is dependent on the type of assembly, and in accordance with the laws governing part and product retention. After the end of this period, the assembly will no longer be available.
5. "MCD" marks in remarks column are indicated supply parts of Matsushita Communication Deutschland GmbH (MCD).

Ref. No.	Part No.	Part Name & Description	Remarks
[E-9101A] Main Block			
IC's AND TRANSISTORS			
IC501	C1EB00000047	IC	
IC601	C2CBKH000010	IC	
IC621	C0CBAJC00006	IC	
IC651	C3EBEG000025	IC	
IC661	C0JBAZ000093	IC	
IC671	C0JBAZ001229	IC	
IC681	C0JBAZ001754	IC	
IC701	C0CBABC00039	IC	
IC702	C0CVADC00035	IC	
IC711	C0CBADG00005	IC	
IC721	MN1382QP	IC	
IC722	C0EBM0000009	IC	
IC901	C0JBAZ000093	IC	
Q601	B1GBCFJN0009	Transistor	
Q602	B1GDCFN00002	Transistor	
Q603	B1GBCFJN0009	Transistor	
Q604	2SB0766AWL	Transistor	
Q605	2SB0766AWL	Transistor	
Q611	B1GBCFJN0009	Transistor	
Q612	B1GDCFN00007	Transistor	
Q751	B1ABCF000042	Transistor	
Q752	B1ABCF000042	Transistor	
Q753	B1ABCF000044	Transistor	
Q754	B1ABCF000042	Transistor	
Q755	B1GDCFGG0002	Transistor	
Q759	B1ABCF000044	Transistor	
Q780	B1GDCFJN0011	Transistor	
Q781	B1GBCFNN0009	Transistor	
Diodes			
D601	B0ECKP000002	Diode	
D611	MA8033-HTX	Diode	
D612	MA8043MTX	Diode	
D613	MA8051-HTX	Diode	
D614	MA8043MTX	Diode	
D615	MA8091-HTX	Diode	
D616	MA8043MTX	Diode	
D630	MAZ805600L	Diode	
D631	MAZ805600L	Diode	
D632	MAZ805600L	Diode	

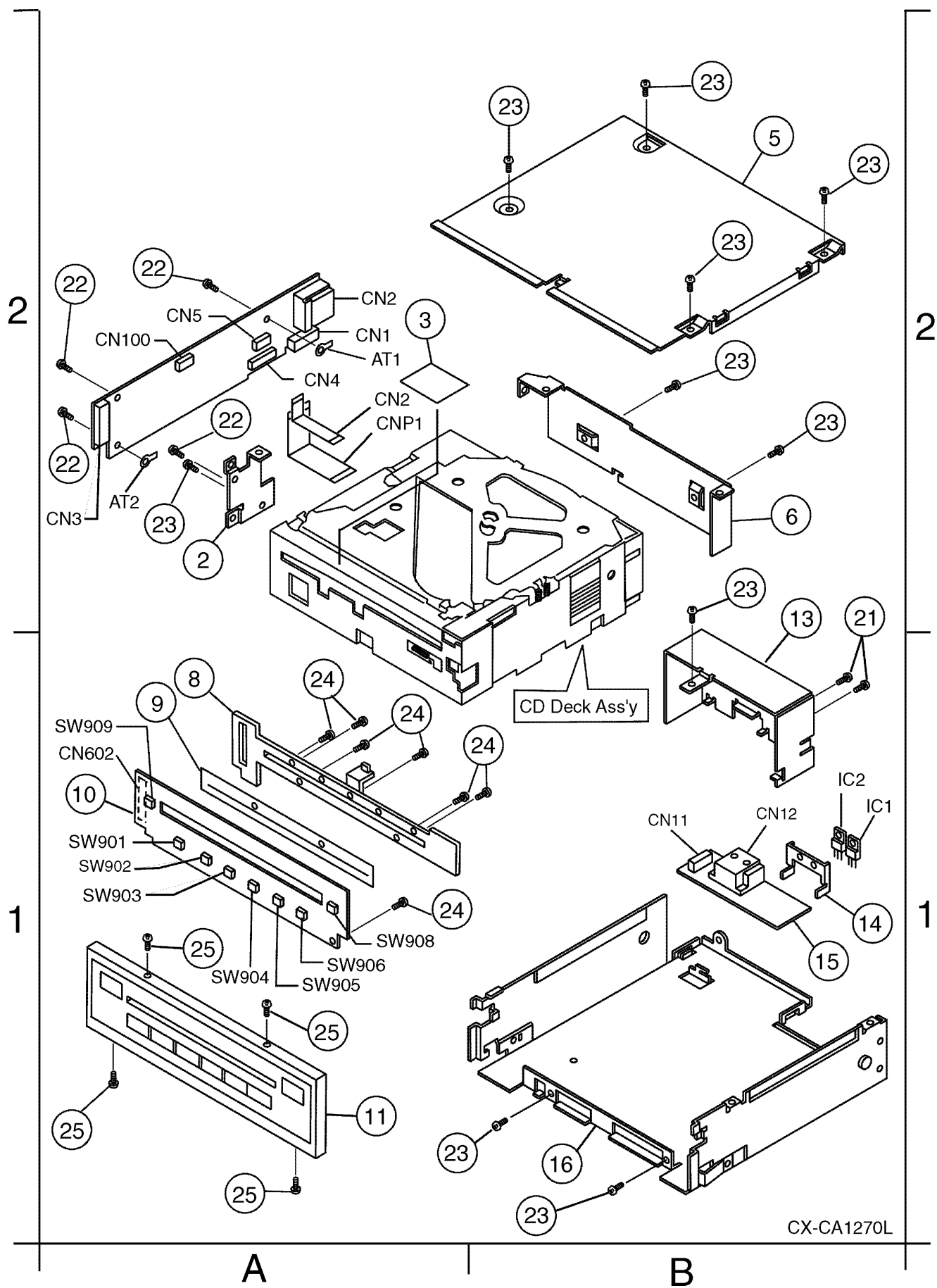
Ref. No.	Part No.	Part Name & Description	Remarks
D633	MAZ805600L	Diode	
D634	MAZ805600L	Diode	
D635	MAZ805600L	Diode	
D636	MAZ805600L	Diode	
D637	MAZ805600L	Diode	
D638	MAZ805600L	Diode	
D639	MAZ805600L	Diode	
D701	B0ECKP000004	Diode	
D751	MA3X152A0L	Diode	
D752	MA3X152A0L	Diode	
D753	MA3X152A0L	Diode	
D755	MA8091-HTX	Diode	
D756	MA3X152A0L	Diode	
CAPACITORS			
C501	FlH1C104A005	Ceramic, 0.1pF 16WV	
C502	FlH1C104A005	Ceramic, 0.1pF 16WV	
C503	FlH1C104A005	Ceramic, 0.1pF 16WV	
C504	FlH1C104A005	Ceramic, 0.1pF 16WV	
C505	FlH1C104A005	Ceramic, 0.1pF 16WV	
C507	FlH1C104A005	Ceramic, 0.1pF 16WV	
C508	F3G1C106A001	Ceramic, 10pF 16WV	
C601	FlH1H150A231	Ceramic, 15PF 50WV	
C602	FlH1H150A231	Ceramic, 15PF 50WV	
C603	FlH1C104A005	Ceramic, 0.1pF 16WV	
C604	FlH1E223A011	Ceramic, 0.022pF 25WV	
C605	FlH1H103A201	Ceramic, 0.01pF 25WV	
C606	FlH1C104A005	Ceramic, 0.1pF 16WV	
C608	FlJ1C1050013	Ceramic, 1pF 16WV	
C609	FlH1C104A005	Ceramic, 0.1pF 16WV	
C651	FlH1C104A005	Ceramic, 0.1pF 16WV	
C661	FlH1C104A005	Ceramic, 0.1pF 16WV	
C671	FlH1C104A005	Ceramic, 0.1pF 16WV	
C681	FlH1C104A005	Ceramic, 0.1pF 16WV	
C701	FlH1C104A005	Ceramic, 0.1pF 16WV	
C702	ECEV0JA470SR	Electrolytic, 47pF 6.3WV	
C703	ECEV1CA220SR	Electrolytic, 22pF 16WV	
C704	FlH1C104A005	Ceramic, 0.1pF 16WV	
C705	FlH1C104A005	Ceramic, 0.1pF 16WV	
C706	F3G1C106A001	Ceramic, 10pF 16WV	
C711	FlH1C104A005	Ceramic, 0.1pF 16WV	
C712	ECEV0JA470SR	Electrolytic, 47pF 6.3WV	
C713	FlH1C104A005	Ceramic, 0.1pF 16WV	
C721	FlH1C104A005	Ceramic, 0.1pF 16WV	
C722	ECEV0JA470SR	Electrolytic, 47pF 6.3WV	
C723	FlH1C104A005	Ceramic, 0.1pF 16WV	
C751	FlH1C473A005	Ceramic, 0.047pF 16WV	
C752	F3G1C106A001	Ceramic, 10pF 16WV	
C753	FlH1C104A005	Ceramic, 0.1pF 16WV	
C754	F3G1C106A001	Ceramic, 10pF 16WV	
C755	FlH1C104A005	Ceramic, 0.1pF 16WV	
C756	ECEV1AA470P	Electrolytic, 47pF 10WV	
C757	FlH1C104A005	Ceramic, 0.1pF 16WV	
C758	FlH1C104A005	Ceramic, 0.1pF 16WV	
RESISTORS			
L504	ERJ6GEY0R00V	Chip, 0 Ω 1/10W	
L753	ERJ6GEY0R00V	Chip, 0 Ω 1/10W	
R501	ERJ3GEYJ151V	Chip, 150 Ω 1/16W	
R502	ERJ3GEYJ470V	Chip, 47 Ω 1/16W	
R503	ERJ3GEYJ473V	Chip, 47k Ω 1/16W	
R505	ERJ3GEYJ394V	Chip, 390k Ω 1/16W	
R507	ERJ3GEYJ222V	Chip, 2.2k Ω 1/16W	
R508	ERJ3GEYJ103V	Chip, 10k Ω 1/16W	
R509	ERJ3GEYJ472V	Chip, 4.7k Ω 1/16W	
R510	ERJ3GEYJ472V	Chip, 4.7k Ω 1/16W	
R511	ERJ3GEYJ472V	Chip, 4.7k Ω 1/16W	
R602	ERJ3GEYJ472V	Chip, 4.7k Ω 1/16W	
R603	ERJ3GEYJ472V	Chip, 4.7k Ω 1/16W	
R606	ERJ3GEYJ103V	Chip, 10k Ω 1/16W	
R608	ERJ3GEYJ473V	Chip, 47k Ω 1/16W	

Ref. No.	Part No.	Part Name & Description	Remarks
R609	ERJ3GEYJ473V	Chip, 47k Ω 1/16W	
R610	ERJ3GEY0R00V	Chip, 0 Ω 1/16W	
R611	ERJ3GEYJ471V	Chip, 470 Ω 1/16W	
R612	ERJ3GEYJ122V	Chip, 1.2k Ω 1/16W	
R613	ERJ3GEYJ471V	Chip, 470 Ω 1/16W	
R614	ERJ3GEYJ102V	Chip, 1k Ω 1/16W	
R615	ERJ3GEYJ471V	Chip, 470 Ω 1/16W	
R616	ERJ3GEYJ271V	Chip, 270 Ω 1/16W	
R617	ERJ3GEYJ103V	Chip, 10k Ω 1/16W	
R618	ERJ3GEYJ103V	Chip, 10k Ω 1/16W	
R619	ERJ3GEYJ103V	Chip, 10k Ω 1/16W	
R620	ERJ3GEYJ222V	Chip, 2.2k Ω 1/16W	
R630	ERJ3GEYJ102V	Chip, 1k Ω 1/16W	
R631	ERJ3GEYJ102V	Chip, 1k Ω 1/16W	
R632	ERJ3GEYJ102V	Chip, 1k Ω 1/16W	
R633	ERJ3GEYJ102V	Chip, 1k Ω 1/16W	
R634	ERJ3GEYJ102V	Chip, 1k Ω 1/16W	
R635	ERJ3GEYJ102V	Chip, 1k Ω 1/16W	
R636	ERJ3GEYJ102V	Chip, 1k Ω 1/16W	
R637	ERJ3GEYJ102V	Chip, 1k Ω 1/16W	
R638	ERJ3GEYJ102V	Chip, 1k Ω 1/16W	
R639	ERJ3GEYJ102V	Chip, 1k Ω 1/16W	
R651	ERJ3GEYJ103V	Chip, 10k Ω 1/16W	
R652	ERJ3GEYJ103V	Chip, 10k Ω 1/16W	
R653	ERJ3GEYJ103V	Chip, 10k Ω 1/16W	
R661	ERJ3GEYJ104V	Chip, 100k Ω 1/16W	
R671	ERJ3GEYJ473V	Chip, 47k Ω 1/16W	
R672	ERJ3GEYJ473V	Chip, 47k Ω 1/16W	
R673	ERJ3GEYJ332V	Chip, 3.3k Ω 1/16W	
R674	ERJ3GEYJ474V	Chip, 470k Ω 1/16W	
R675	ERJ3GEYJ182V	Chip, 1.8k Ω 1/16W	
R676	ERJ3GEY0R00V	Chip, 0 Ω 1/16W	
R677	ERJ3GEY0R00V	Chip, 0 Ω 1/16W	
R681	ERJ3GEYJ104V	Chip, 100k Ω 1/16W	
R683	ERJ3GEY0R00V	Chip, 0 Ω 1/16W	
R751	ERJ3GEYJ472V	Chip, 4.7k Ω 1/16W	
R752	ERJ3GEYJ473V	Chip, 47k Ω 1/16W	
R753	ERJ3GEYJ103V	Chip, 10k Ω 1/16W	
R754	ERJ3GEYJ472V	Chip, 4.7k Ω 1/16W	
R755	ERJ3GEYJ473V	Chip, 47k Ω 1/16W	
R756	ERJ3GEYJ103V	Chip, 10k Ω 1/16W	
R757	ERJ3GEYJ473V	Chip, 47k Ω 1/16W	
R758	ERJ3GEYJ332V	Chip, 3.3k Ω 1/16W	
R759	ERJ3GEYJ153V	Chip, 15k Ω 1/16W	
R760	ERJ3GEYJ101V	Chip, 100 Ω 1/16W	
R761	ERJ3GEYJ223V	Chip, 22k Ω 1/16W	
R762	ERJ3GEYJ104V	Chip, 100k Ω 1/16W	
R763	ERJ3GEYJ472V	Chip, 4.7k Ω 1/16W	
R764	ERJ3GEYJ470V	Chip, 47 Ω 1/16W	
R767	ERJ3GEYJ333V	Chip, 33k Ω 1/16W	
R768	ERJ3GEYJ333V	Chip, 33k Ω 1/16W	
R769	ERJ3GEYJ100V	Chip, 10 Ω 1/16W	
R770	ERJ3GEYJ104V	Chip, 100k Ω 1/16W	
R771	ERJ3GEYJ104V	Chip, 100k Ω 1/16W	
R780	ERJ3GEYJ101V	Chip, 100 Ω 1/16W	
R910	ERJ3GEYJ473V	Chip, 47k Ω 1/16W	
CONNECTORS			
CN1	K1KA12B00007	Connector, 12P	
CN100	K1MN06B00008	Connector, 6P	
CN2	K7ACAA000002	Connector, 8P	
CN3	K1KB14B00015	Connector, 14P	
CN4	K1MN14B00020	Connector, 14P	
CN5	K1MN06B00008	Connector, 6P	
COILS			
L102	F1Z1E2220001	Coil	
L501	J0JCC0000053	Coil	
L503	J0JCC0000053	Coil	
L751	F1Z1E2220001	Coil	
L752	F1Z1E2220001	Coil	

Ref. No.	Part No.	Part Name & Description	Remarks
CRYSTALS			
XL501	H2D169500008	Crystal	
XL601	H0J124500002	Crystal	
[E-9102] Power Block			
IC's AND TRANSISTORS			
IC1	C0DAZH000001	IC	
IC2	C0CAZDG00001	IC	
Diodes			
D1	B0BA04700004	Diode	
D2	B0BA04700001	Diode	
CAPACITORS			
C1	ECA1CM102B	Electrolytic, 1000 μ F 16WV	
C2	ECA1AM471B	Electrolytic, 470 μ F 10WV	
C3	ECA0JM471B	Electrolytic, 470 μ F 6.3WV	
C5	F4D552230004	Electrolytic, 0.022F 5.5WV	
CONNECTORS			
CN11	K1KB12A00004	Connector, 12P	
CN12	K1FA108B0013	Connector, 8P	
[E-9103] Display Block			
IC's AND TRANSISTORS			
IC901	C0GBA0000002	IC	
DIODES			
D901	B3AAB0000130	Diode	
D903	B3AAB0000130	Diode	
D904	B3AAB0000130	Diode	
D911	B3AAB0000130	Diode	
D912	B3AAB0000130	Diode	
D913	B3AAB0000130	Diode	
D914	B3AAB0000130	Diode	
D915	B3AAB0000130	Diode	
D916	B3AAB0000130	Diode	
D917	B3AAB0000130	Diode	
D918	B3AAB0000130	Diode	
D920	B3AAB0000130	Diode	
D921	B3AAB0000130	Diode	
CAPACITOR			
C902	F1J1C104A005	Ceramic, 0.1 μ F 16WV	
RESISTORS			
J901	ERJ8GEY0R00V	Chip, 0 Ω 1/8W	
J902	ERJ8GEY0R00V	Chip, 0 Ω 1/8W	
J903	ERJ8GEY0R00V	Chip, 0 Ω 1/8W	
J904	ERJ8GEY0R00V	Chip, 0 Ω 1/8W	
J905	ERJ8GEY0R00V	Chip, 0 Ω 1/8W	
J906	ERJ8GEY0R00V	Chip, 0 Ω 1/8W	
J907	ERJ8GEY0R00V	Chip, 0 Ω 1/8W	
J908	ERJ8GEY0R00V	Chip, 0 Ω 1/8W	
J909	ERJ8GEY0R00V	Chip, 0 Ω 1/8W	
J910	ERJ8GEY0R00V	Chip, 0 Ω 1/8W	
J911	ERJ8GEY0R00V	Chip, 0 Ω 1/8W	
R904	ERJ8GEYJ392V	Chip, 3.9k Ω 1/8W	
R905	ERJ6GEYJ392	Chip, 3.9k Ω 1/10W	
R906	ERJ8GEYJ152V	Chip, 1.5k Ω 1/8W	
R907	ERJ8GEYJ152V	Chip, 1.5k Ω 1/8W	

Ref. No.	Part No.	Part Name & Description	Remarks
R908	ERJ8GEYJ152V	Chip, 1.5k Ω 1/8W	
R909	ERJ8GEYJ152V	Chip, 1.5k Ω 1/8W	
R910	ERJ8GEYJ152V	Chip, 1.5k Ω 1/8W	
R911	ERJ8GEYJ152V	Chip, 1.5k Ω 1/8W	
R912	ERJ6GEYJ152	Chip, 1.5k Ω 1/10W	
R913	ERJ6GEYJ152	Chip, 1.5k Ω 1/10W	
CONNECTOR			
CN602	K1KA14A00154	Connector, 14P	
SWITCHES			
SW901	YEAS09320	Switch	
SW902	YEAS09320	Switch	
SW903	YEAS09320	Switch	
SW904	YEAS09320	Switch	
SW905	YEAS09320	Switch	
SW906	YEAS09320	Switch	
SW907	YEAS09320	Switch	
SW908	YEAS09320	Switch	
Mechanical Parts			
MISCELLANEOUS			
AT1	K4CD01000002	Bracket, GND	
AT2	K4CD01000002	Bracket, GND	
1	YEP0PT9101Z9	PCB w/Component	RTL
2	FEFX0214539B	Bracket, PCB Fixed	
3	YEFM031271	Laser Seal	
5	YEFA031799	Upper Cover	
6	YEFA08559	Rear Chassis	
8	YEFX9992667	Disc Guide	
9	YEFS011826	Dust Felt	
10	YEP0PT9103Z9	PCB w/Component	RTL
11	YEFC027378	Escutcheon Ass'y	
13	YEFA05820	Connector Cover	
14	YEFX0215803	Bracket, Reg.	
15	YEP0PT9102Z9	PCB w/Component	RTL
16	YEFA011968	Chassis Ass'y	
21	YEJT03009	Screw, M3x8mm	
22	YEJT03142	Screw,	
23	XTB3+5FFX	Screw, M3x5mm	
24	XTB2+6GFX	Screw, M2x6mm	
25	XQN2+B5FZ	Screw, M2x5mm	

10 EXPLODED VIEW (Unit)



11 CD CHANGER PARTS LIST

Ref. No.	Part No.	Part Name & Description	Remarks
[E9060A] CD Servo Block			
IC's and TRANSISTORS			
IC101	C1BB00000624	IC	
IC201	MN662785TBUC	IC	
IC202	C3ABMB000009	IC	
IC301	C2BBGF000364	IC	
IC401	C0DBZGE00002	IC	
IC501	C0GBH0000006	IC	
IC601	C0GBY0000014	IC	
Q101	2SB766ATX	Transistor	
DIODE			
D301	MA152WKTJ	Diode	
CAPACITORS			
C1	EEVFC0J102P	Electrolytic, 1000µF 6.3WV	
C101	F1H1C104A005	Ceramic, 0.1µF 16WV	
C102	F1H1C104A005	Ceramic, 0.1µF 16WV	
C103	F3H0J1070005	Tantalum, 100µF 6.3WV	
C104	F1H1C104A005	Ceramic, 0.1µF 16WV	
C105	F1H1C104A005	Ceramic, 0.1µF 16WV	
C106	F1H1H8210002	Ceramic, 820PF 50WV	
C107	F1H1C104A005	Ceramic, 0.1µF 16WV	
C108	F1H1H682A190	Ceramic, 6800PF 50WV	
C109	F1H1H222A190	Ceramic, 2200PF 50WV	
C110	F1K0J1060015	Ceramic, 10 µF 6.3WV	
C111	F1H1H1010005	Ceramic, 100PF 50WV	
C112	F1H1E103A011	Ceramic, 0.01µF 25WV	
C113	F1H1E103A011	Ceramic, 0.01µF 25WV	
C114	F1H1H2710006	Ceramic, 270PF 50WV	
C115	F1H1H6810005	Ceramic, 680PF 50WV	
C116	F1H1C104A005	Ceramic, 0.1µF 16WV	
C117	F1K0J1060015	Ceramic, 10 µF 6.3WV	
C201	F1H1C104A005	Ceramic, 0.1µF 16WV	
C202	F1H1E123A011	Ceramic, 0.012µF 25WV	
C203	YECUZ1A224KX	Ceramic, 0.22µF 10WV	
C205	F1H1A4740004	Ceramic, 0.47µF 10WV	
C206	F1K0J1060015	Ceramic, 10 µF 6.3WV	
C208	EEVFC0J102P	Electrolytic, 1000µF 6.3WV	
C209	F1K0J1060015	Ceramic, 10 µF 6.3WV	
C210	F1H0J1050010	Ceramic, 1µF 6.3WV	
C211	F1H0J1050010	Ceramic, 1µF 6.3WV	
C301	F1K0J1060015	Ceramic, 10 µF 6.3WV	
C302	F1H1E103A011	Ceramic, 0.01µF 25WV	
C312	F1H1C104A005	Ceramic, 0.1µF 16WV	
C313	F1H1C104A005	Ceramic, 0.1µF 16WV	
C315	F1H1C104A005	Ceramic, 0.1µF 16WV	
C401	F1H0J1050010	Ceramic, 1µF 6.3WV	
C402	F1K0J1060015	Ceramic, 10 µF 6.3WV	
C501	F1H1C104A005	Ceramic, 0.1µF 16WV	
C502	F1H1C104A005	Ceramic, 0.1µF 16WV	
C503	F1H1C104A005	Ceramic, 0.1µF 16WV	
C504	YECUZ1C104KX	Ceramic, 0.1µF 16WV	
C601	F1H1H8210002	Ceramic, 820PF 50WV	
C602	F1H1H8210002	Ceramic, 820PF 50WV	
C603	F1H0J1050010	Ceramic, 1µF 6.3WV	
C604	YECUZ1C333KX	Ceramic, 0.033µF 16WV	
C605	F1H1C104A005	Ceramic, 0.1µF 16WV	
C606	F1H1C104A005	Ceramic, 0.1µF 16WV	
C607	ECEV1CA470SP	Electrolytic, 47µF 16WV	
C608	F1K0J1060015	Ceramic, 10 µF 6.3WV	
RESISTORS			
R1	ERJ3GEYJ334V	Chip, 330kΩ 1/16W	
R2	ERJ3GEYJ102V	Chip, 1kΩ 1/16W	

Ref. No.	Part No.	Part Name & Description	Remarks
R3	ERJ3GEYJ102V	Chip, 1kΩ 1/16W	
R101	ERJ6GEYJ1R0V	Chip, 1.0Ω 1/10W	
R102	ERJ3GEYOR00V	Chip, 0Ω 1/16W	
R103	ERJ3GEYOR00V	Chip, 0Ω 1/16W	
R104	ERJ3GEYJ152V	Chip, 1.5kΩ 1/16W	
R105	ERJ3GEYJ152V	Chip, 1.5kΩ 1/16W	
R106	ERJ3GEYJ563V	Chip, 56kΩ 1/16W	
R107	ERJ3GEYJ223V	Chip, 22kΩ 1/16W	
R108	ERJ3GEYJ333V	Chip, 33kΩ 1/16W	
R109	ERJ3GEYJ473V	Chip, 47kΩ 1/16W	
R110	ERJ3GEYJ102V	Chip, 1kΩ 1/16W	
R111	ERJ3GEYJ102V	Chip, 1kΩ 1/16W	
R201	ERJ3GEYJ823V	Chip, 82kΩ 1/16W	
R202	ERJ3GEYJ473V	Chip, 47kΩ 1/16W	
R203	ERJ3GEYJ473V	Chip, 47kΩ 1/16W	
R204	ERJ3GEYJ271V	Chip, 270Ω 1/16W	
R205	ERJ3GEYJ222V	Chip, 2.2kΩ 1/16W	
R206	ERJ3GEYJ330V	Chip, 33Ω 1/16W	
R207	ERJ3GEYJ102V	Chip, 1kΩ 1/16W	
R208	ERJ3GEYJ102V	Chip, 1kΩ 1/16W	
R209	ERJ3GEYJ102V	Chip, 1kΩ 1/16W	
R210	ERJ3GEYJ102V	Chip, 1kΩ 1/16W	
R211	ERJ3GEYJ332V	Chip, 3.3kΩ 1/16W	
R212	ERJ3GEYJ332V	Chip, 3.3kΩ 1/16W	
R213	ERJ3GEYJ105V	Chip, 1MΩ 1/16W	
R214	ERJ3GEYJ151V	Chip, 150Ω 1/16W	
R301	ERJ3GEYJ563V	Chip, 56kΩ 1/16W	
R302	ERJ3GEYJ563V	Chip, 56kΩ 1/16W	
R303	ERJ3GEYJ332V	Chip, 3.3kΩ 1/16W	
R304	ERJ3GEYJ332V	Chip, 3.3kΩ 1/16W	
R305	ERJ3GEYJ563V	Chip, 56kΩ 1/16W	
R306	ERJ3GEYJ563V	Chip, 56kΩ 1/16W	
R307	ERJ3GEYJ683V	Chip, 68kΩ 1/16W	
R308	ERJ3GEYJ683V	Chip, 68kΩ 1/16W	
R309	ERJ3GEYJ683V	Chip, 68kΩ 1/16W	
R310	ERJ3GEYJ332V	Chip, 3.3kΩ 1/16W	
R311	ERJ3GEYJ332V	Chip, 3.3kΩ 1/16W	
R312	ERJ3GEYJ332V	Chip, 3.3kΩ 1/16W	
R313	ERJ3GEYJ332V	Chip, 3.3kΩ 1/16W	
R314	ERJ3GEYJ332V	Chip, 3.3kΩ 1/16W	
R315	ERJ3GEYJ683V	Chip, 68kΩ 1/16W	
R316	ERJ3GEYJ332V	Chip, 3.3kΩ 1/16W	
R317	ERJ3GEYJ221V	Chip, 220Ω 1/16W	
R318	ERJ3GEYJ221V	Chip, 220Ω 1/16W	
R319	ERJ3GEYJ221V	Chip, 220Ω 1/16W	
R320	ERJ3GEYJ221V	Chip, 220Ω 1/16W	
R321	ERJ3GEYJ221V	Chip, 220Ω 1/16W	
R322	ERJ3GEYJ221V	Chip, 220Ω 1/16W	
R323	ERJ3GEYJ103V	Chip, 10kΩ 1/16W	
R324	ERJ3GEYJ103V	Chip, 10kΩ 1/16W	
R325	ERJ3GEYJ332V	Chip, 3.3kΩ 1/16W	
R326	ERJ3GEYJ473V	Chip, 47kΩ 1/16W	
R327	ERJ3GEYOR00V	Chip, 0Ω 1/16W	
R330	ERJ3GEYJ332V	Chip, 3.3kΩ 1/16W	
R501	ERJ3GEYJ121V	Chip, 120Ω 1/16W	
R502	ERJ8GEYJ1R0V	Chip, 1.0Ω 1/8W	
R503	ERJ3GEYJ121V	Chip, 120Ω 1/16W	
R504	ERJ3GEYJ183V	Chip, 18kΩ 1/16W	
R505	ERJ3GEYJ563V	Chip, 56kΩ 1/16W	
R601	ERJ3GEYJ103V	Chip, 10kΩ 1/16W	
R602	ERJ3GEYJ153V	Chip, 15kΩ 1/16W	
R603	ERJ3GEYJ103V	Chip, 10kΩ 1/16W	
R604	ERJ3GEYJ153V	Chip, 15kΩ 1/16W	
R605	ERJ3GEYJ332V	Chip, 3.3kΩ 1/16W	
R606	ERJ3GEYJ332V	Chip, 3.3kΩ 1/16W	
R607	ERJ3GEYJ103V	Chip, 10kΩ 1/16W	
R608	ERJ3GEYJ153V	Chip, 15kΩ 1/16W	
R609	ERJ3GEYJ153V	Chip, 15kΩ 1/16W	
R610	ERJ3GEYJ332V	Chip, 3.3kΩ 1/16W	
R611	ERJ3GEYJ103V	Chip, 10kΩ 1/16W	
R612	ERJ3GEYJ103V	Chip, 10kΩ 1/16W	
R613	ERJ3GEYJ332V	Chip, 3.3kΩ 1/16W	
R614	ERJ3GEYJ101V	Chip, 100Ω 1/16W	

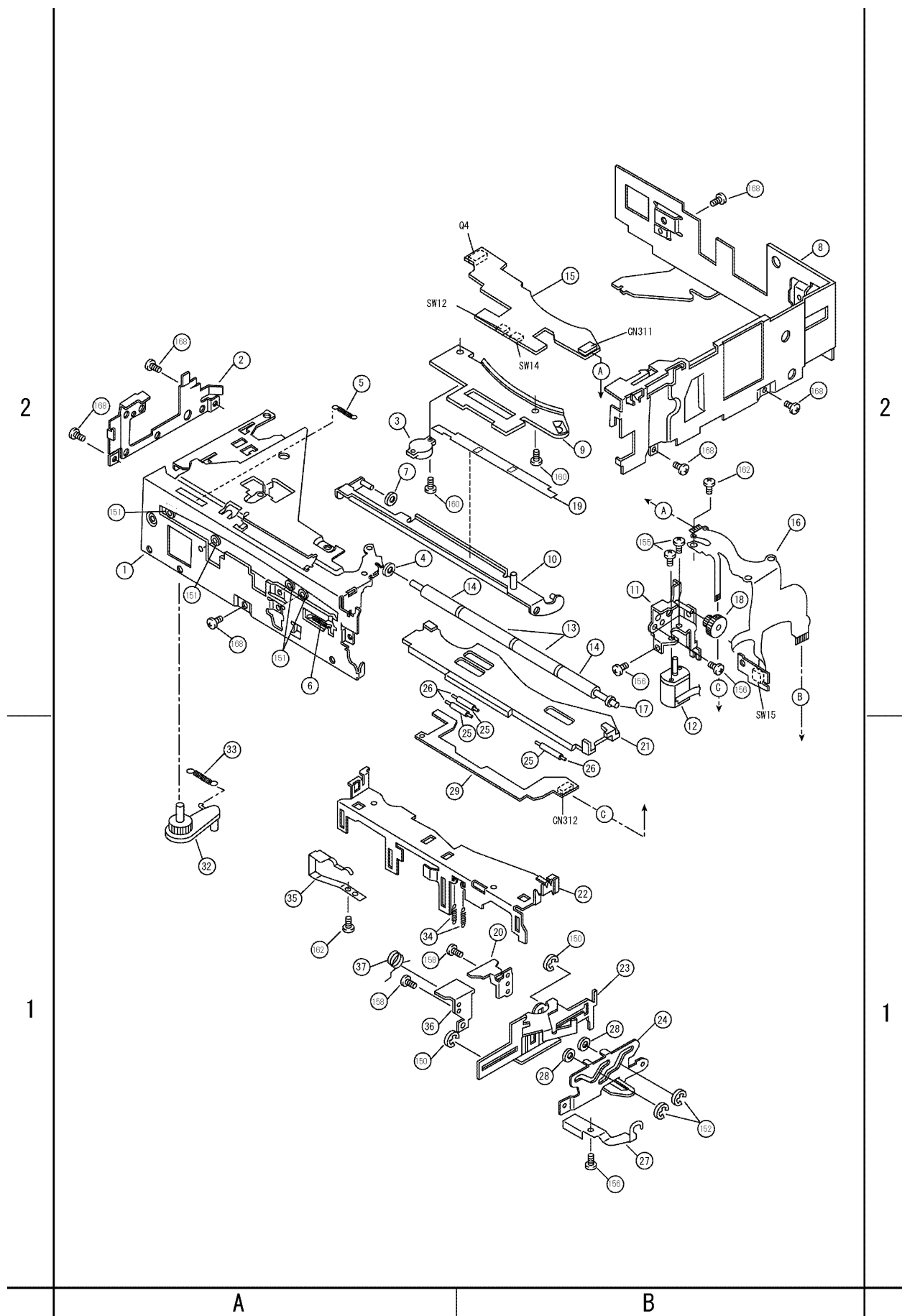
Ref. No.	Part No.	Part Name & Description	Remarks
R615	ERJ3GEYJ563V	Chip, 56k Ω 1/16W	
R616	ERJ3GEYJ153V	Chip, 15k Ω 1/16W	
CONNECTORS			
CN1	K1MN14B00080	Connector, 14P	
CN2	K1MN06B00083	Connector, FPC 6P	
CN101	YEAESFW15R1E	Connector, 15P	
CN301	K1MN19B00054	Connector, 19P	
CN302	K1MN06B00085	Connector, 6P	
CN501	YEAESFW15R1E	Connector, 15P	
CN601	YEAES326102	Connector, 2P	
SWITCHES			
SW8	K0L1BA000023	Switch	
SW9	K0L1BA000022	Switch	
SW10	K0L1BA000022	Switch	
SW11	K0L1BA000022	Switch	
CRYSTALS			
XL201	H2D338500002	Crystal	
XL301	H2D500400004	Crystal	
NOISE FILTERS			
L1	J0JAC0000047	Noise Filter	
L2	J0JAC0000047	Noise Filter	
L3	J0JAC0000047	Noise Filter	
L4	J0JAC0000047	Noise Filter	
L5	J0JAC0000047	Noise Filter	
L6	J0JAC0000047	Noise Filter	
L201	J0JAC0000047	Noise Filter	
L202	J0JAC0000047	Noise Filter	
[E2784]			
CONNECTOR			
CNP1	K1MN11B00062	Connector, 14P	
SWITCH			
SW1	K0L1BA000023	Push Switch	
[E2787]			
SWITCH			
SW15	K0L1BA000023	Push Switch	
[E2788]			
TRANSISTOR			
Q1	B3NAA0000065	Transistor	
SWITCH			
SW2	K0L1BA000023	Push Switch	
[E2785]			
IC's and TRANSISTORS			
Q4	B3NAA0000065	Transistor	
Q5	B3HB00000012	Transistor	
Q6	B3HB00000012	Transistor	
Q7	B3HB00000012	Transistor	
Q13	B3HB00000012	Transistor	

Ref. No.	Part No.	Part Name & Description	Remarks
CONNECTOR			
CN311	K1MN09B00006	Connector, 9P	
SWITCHES			
SW12	K0L1BA000023	Switch	
SW14	K0L1BA000023	Switch	
[E2786]			
DIODES			
D5	B3EB00000013	Diode	
D6	B3EB00000013	Diode	
D7	B3EB00000013	Diode	
D13	B3EB00000013	Diode	
CONNECTOR			
CN312	K1MN06A00016	Connector, 6P	
Mechanical Parts			
MISCELLANEOUS			
AJ1	YGAJ071495	Motor Power Cord w/Plug, 2P	
AT1	YEATSD00405	Bracket, GND	
1	YGFA011975A	Upper Chassis Ass'y	
2	YGFX018678A	Side Bracket L	
3	YGFS04752	Rotary Damper Ass'y	
4	YEFW04159A	Roller Shaft Collar	
5	YGFX0052588	Outline Detection Spring	
6	YGFX0052591	Feeder lock Lever Spring	
7	YGFX0051590	Off Backlash Spring	
8	YGFA011965A	Side Chassis R	
9	YGFX206150	Disc Guide U	
10	YGFX249492A	Feeder Arm Ass'y	
11	YGFX018690	Loading Motor Bracket Ass'y	
12	YGPOFX4762	Loading Motor Ass'y	
13	YEFX218299	Rubber Roller	
14	YGFW05412	Disc Collar	
15	YGPOPT2785A0	PCB w/Component	RTL
16	YGAP2787	Loading Motor FPC	
17	YGFW05414	Collar Shaft Ass'y	
18	YGFX0031122	Loading Gear	
19	YGFX206157	Feeder Piece	
20	YGFX206152A	Guide FL	
21	YGFX206158	Slide Plate	
22	YGFX0462168A	Feeder Plate	
23	YGFX219134A	Guide F Base	
24	YGFX0462182	Guide Cam F Plate Ass'y	
25	YGFX218296	Disc Roller	
26	YGFW062741	Shaft	
27	YGFX0052602	Roller Plate Spring	
28	YGFW04181	Guide Plate Collar	
29	YGPOPT2786A0	PCB w/Component	RTL
32	YGFX0462153	Push Lever	
33	YGFX0052589	Push Spring	
34	YGFX0052590	Feeder Spring	
35	YGFX0052601A	Spring	
36	YGFX206153	Guide FU	
37	YEFX0052335	Guide Spring F	

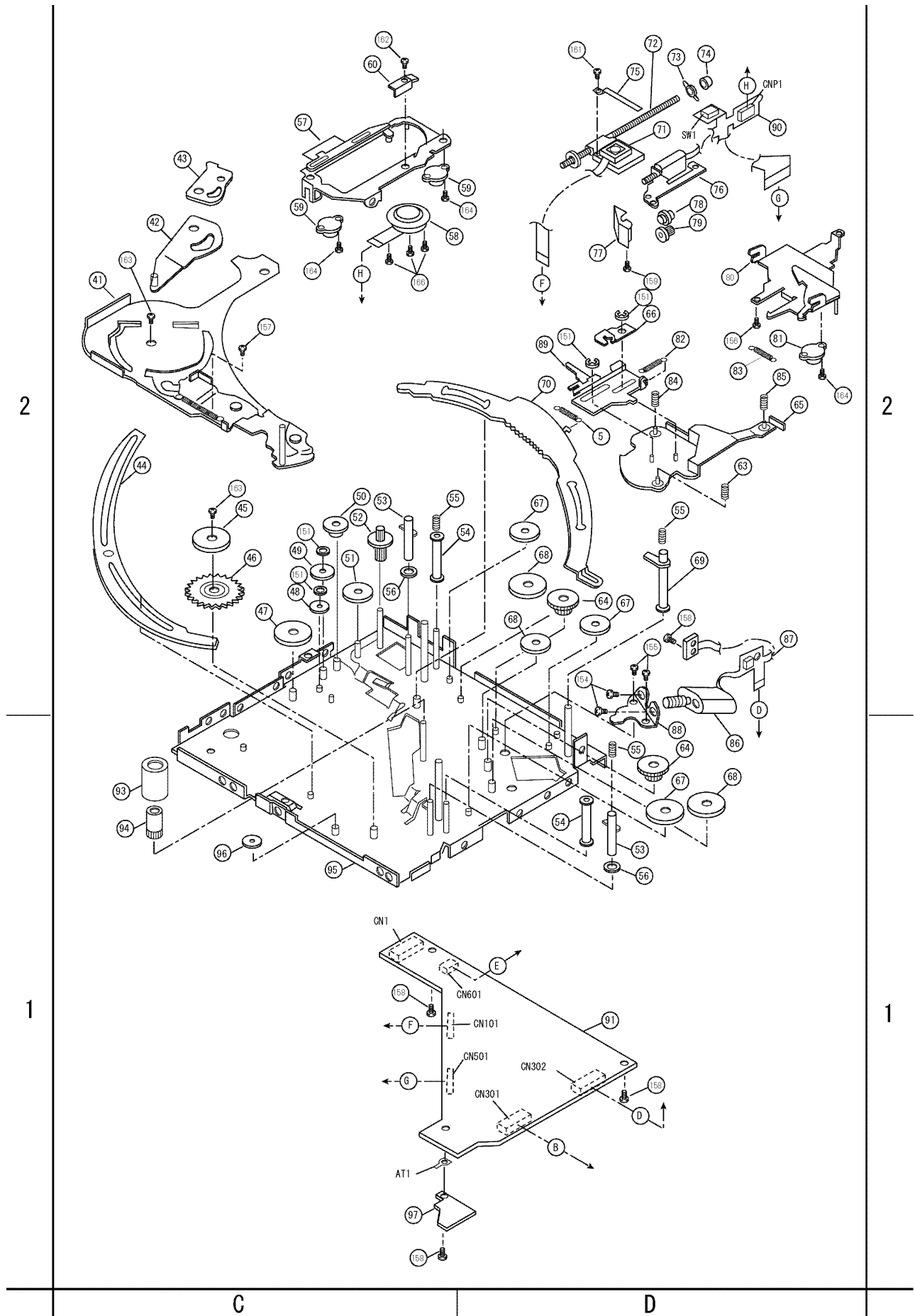
Ref. No.	Part No.	Part Name & Description	Remarks
41	YGFA011977C	Swing Chassis Ass'y	
42	YGFX0461903	Guide Lever Ass'y B	
43	YGFX018595	Guide B	
44	YGFX0462172	Horizontal Rack	
45	YGFX234196	Horizontal Cam	
46	YGFX0031127B	Horizontal Cam Gear	
47	YGFX0031130	Horizontal Cam Gear	
48	YEFX003931	Horizontal Gear 5	
49	YEFX003899B	Horizontal Gear 4	
50	YGFX0031125	Horizontal Gear 3	
51	YGFX0031139	Gear	
52	YEFX003896	Horizontal Gear 1	
53	YEFX003884	Stocker Cam 3	
54	YEFX003883B	Stocker Cam 2	
55	YGFX0052595	Stocker Thrust Spring	
56	YEFX003875A	Elevator Gear 4	
57	YGFA011973	Suspension Chassis Ass'y	
58	YGP0FX4646	Spindle Motor Ass'y	
59	YGFS04745	Damper 2	
60	YGFX206156	Disc Guide S	
63	YGFX0052582A	Damper Spring R	
64	YEFX003872	Elevator Gear 1	
65	YGFA011963A	Swing Chassis	
66	YGFX0462183	Lever	
67	YGFX003873	Elevator Gear 2	
68	YEFX003874	Elevator Gear 3	
69	YEFX003882A	Stocker Cam 1	
70	YGFX0462173	Stocker Rack	
71	YEP0FX4382	Optical Pick-up Ass'y	
72	YGJT03301	Feed Screw Ass'y	
73	YGFX0052586	Thrust Adjustment Spring	
74	YEFW04161A	Feed Screw Housing	
75	YEFX0052557	Travers Guide	
76	YGP0FX4763	Traverse Motor Ass'y	
77	YGFX018682	Gear Bracket	
78	YGFX0031119	TR Gear 2	
79	YGFX0031120	TR Gear 3	
80	YGFA011974	Suspension Chassis Bottom Ass'y	
81	YGFS04746	Damper 1	
82	YGFX0052596	Stocker Spring	
83	YGFX0052587	Unclamp Spring	
84	YGFX0052583A	Damper Spring	
85	YGFX0052581A	Damper Spring F	
86	YEP0FX3660S	Elevator Motor Ass'y	
87	YGAP2788	Elevator Motor FPC	
88	YGFX018600	Elevator Motor Bracket	
89	YGFX0462174A	Suspension Lock Plate	
90	YGAP2784	Suspension FPC	
91	YGP0PT9060A0	PCB w/Component	RTL
93	YEFX233521	Disc Holder L	
94	YGFX0031007	Disc Hold Gear	
95	YGFA011976B	Main Chassis Ass'y	
96	YGFX0031128	Clamp Cam Gear	
97	YGFX0462166	SW Cover	
100	YGFX0462184	Guide Cam B Plate Ass'y	
101	YGFX219135	Guide B Base Ass'y	
102	YGFX206155A	Guide BL	
103	YEFX206136D	Guide BU	
104	YEFX0052272	Guide Spring B	
105	YGFX0462164	Avoidance Lever 1	
106	YGFX0031137	Pushout Cam Gear	
110	YGFA011978	Stocker Top Coner Ass'y	
111	YGFX233526	Stocker Tray Support	
112	YGFX0462163	Pushout Lever	
113	YGFX018691	Horizontal Motor Bracket Ass'y	
114	YGP0FX4760	Horizontal Motor Ass'y	
115	YGFX0031133	Pushout Gear 2	
116	YGFX0031131	Pushout Gear 1	
117	YEFX233506	Disc Holder U	
118	YGFX0052608	Push Lever Spring	
120	YGFX0052291B	Pushout Plate Spring	

Ref. No.	Part No.	Part Name & Description	Remarks
131	YGFX233527	Stocker Tray Housing L	
132	YGFX9992609	Stocker Tray	
150	XUC15V	Retaining Ring	
151	XUC2V	E-Ring	
152	YEJE01044	Retaining Ring	
154	XQN2+A2FX	Screw, M2x2mm	
155	XQN2+C2FX	Screw, M2x2mm	
156	XSB2+3FX	Bind Screw, M2x3mm	
157	XSB2+4FX	Bind Screw, M2x4mm	
158	XYN2+C4FX	Screw w/Washer, M2x4mm	
159	XYN2+C5FX	Screw w/Washer, M2x5mm	
160	XYN2+C6FX	Screw w/Washer, M2x6mm	
161	YEJS02037A	Tapping Screw	
162	YGJS05050	Thin Head Screw w/Washer	
163	YGJS05051	Thin Head Screw w/Washer	
164	YGJS05063	Screw w/Washer	
165	YEJS06097A	Screw	
166	YEJS06246	Super Thin Head Screw	
168	YEJT03129	Tapping Screw	

12 EXPLODED VIEW (CD Deck-1)



13 EXPLODED VIEW (CD Deck-2)



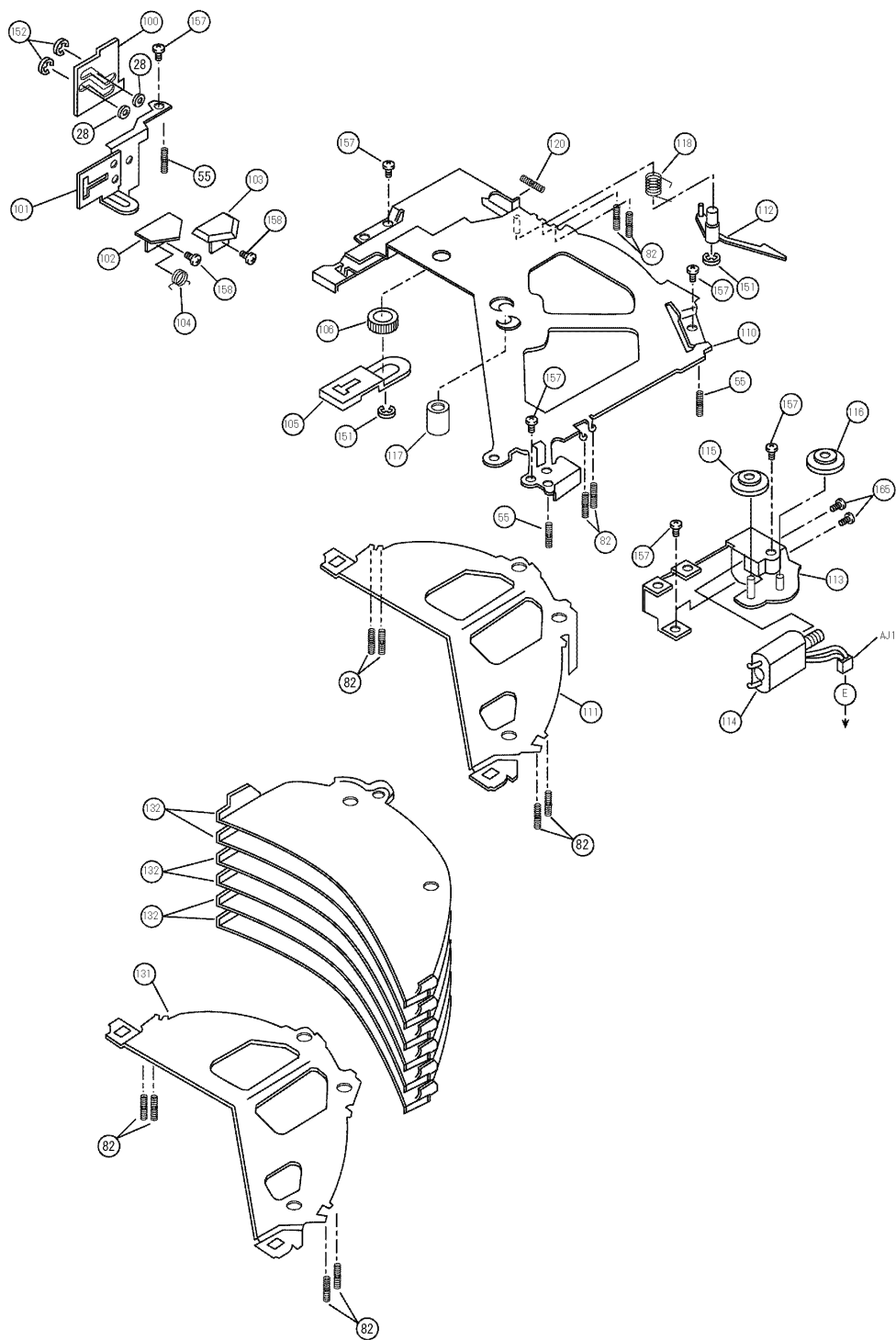
14 EXPLODED VIEW (CD Deck-3)

2

2

1

1



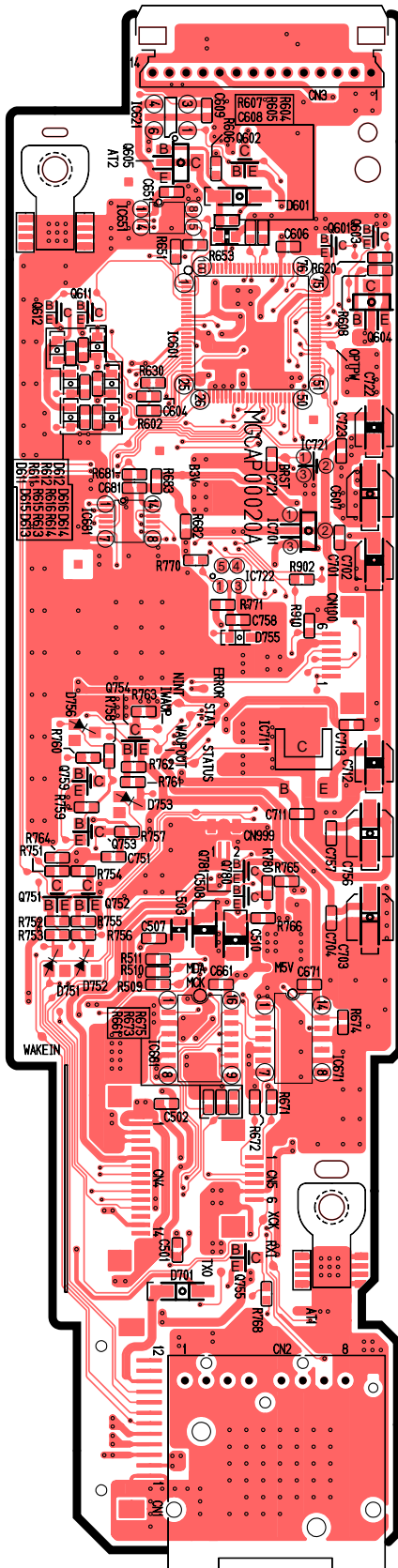
YGFD13192
2002. 8. 26

E

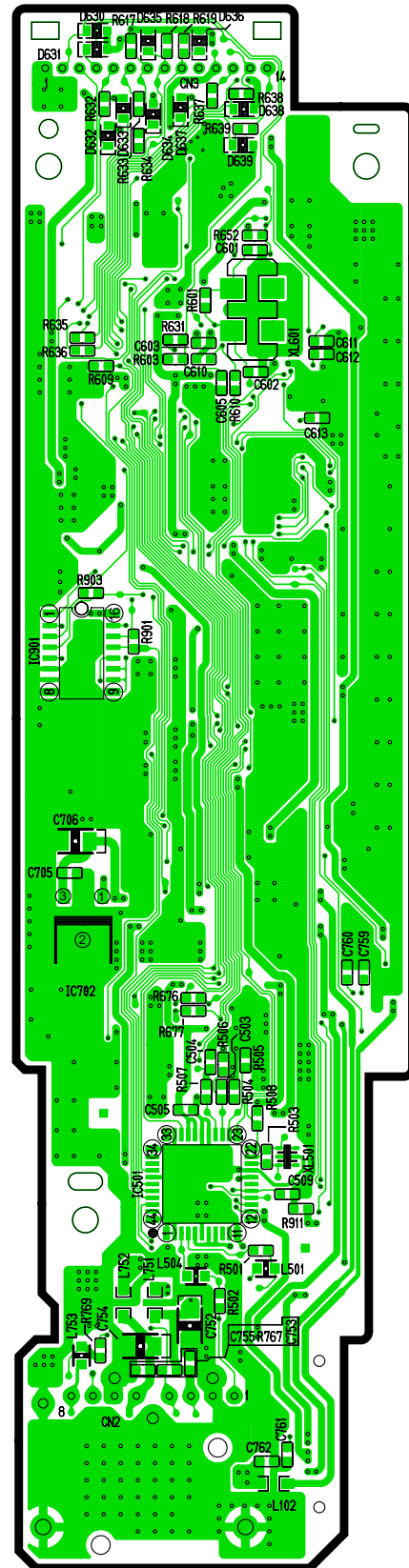
F

15 WIRING DIAGRAM

15.1. Main Block



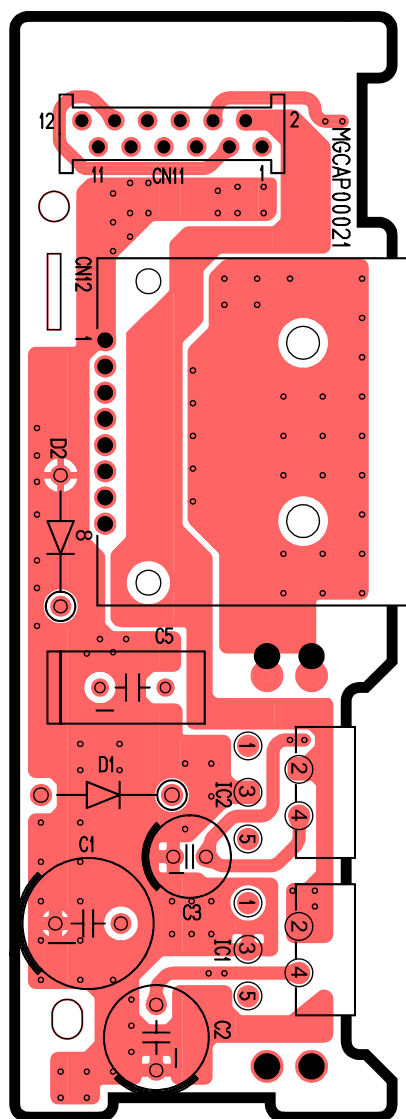
[E-9101A][Top View]



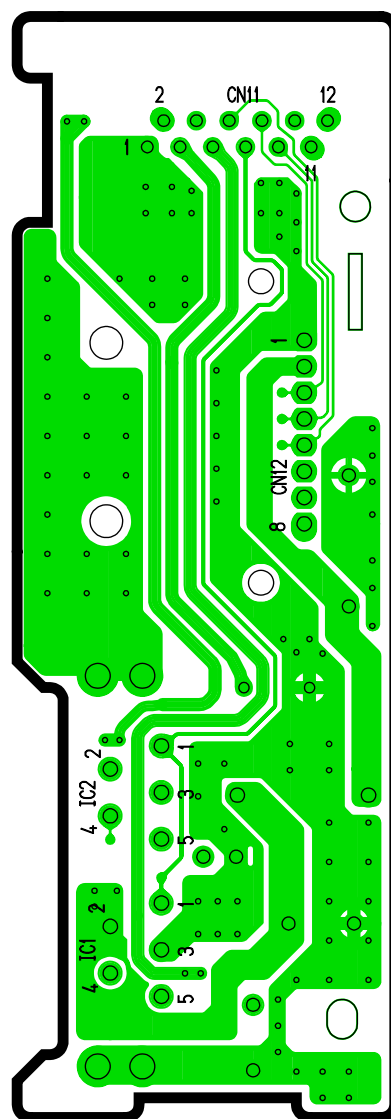
[E-9101A][Bottom View]

CX-CA1270L MAIN

15.2. Power Block



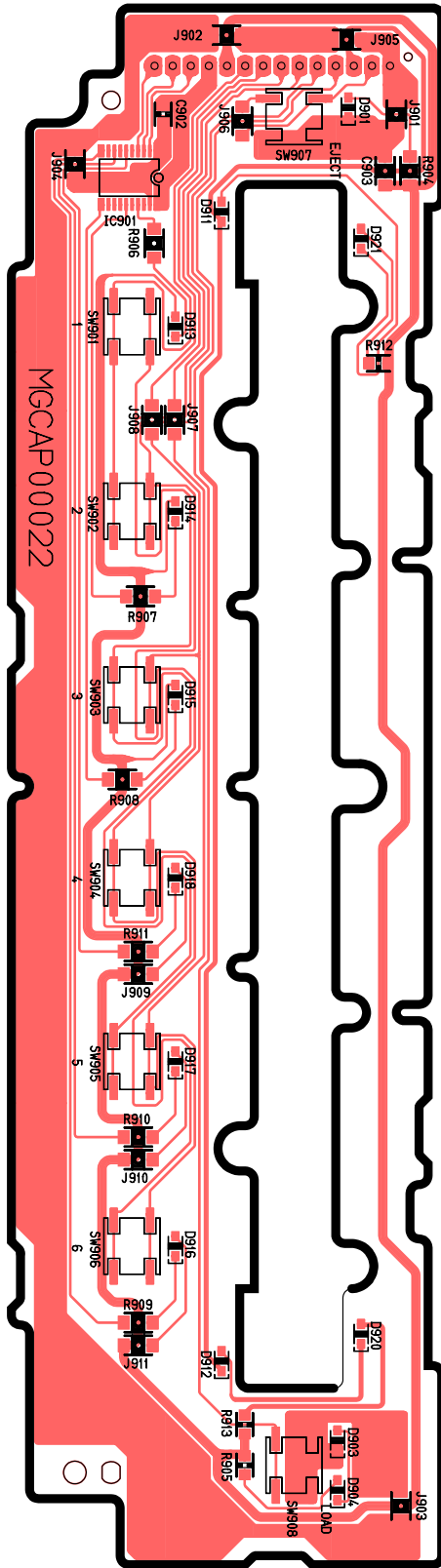
[E-9102][Top View]



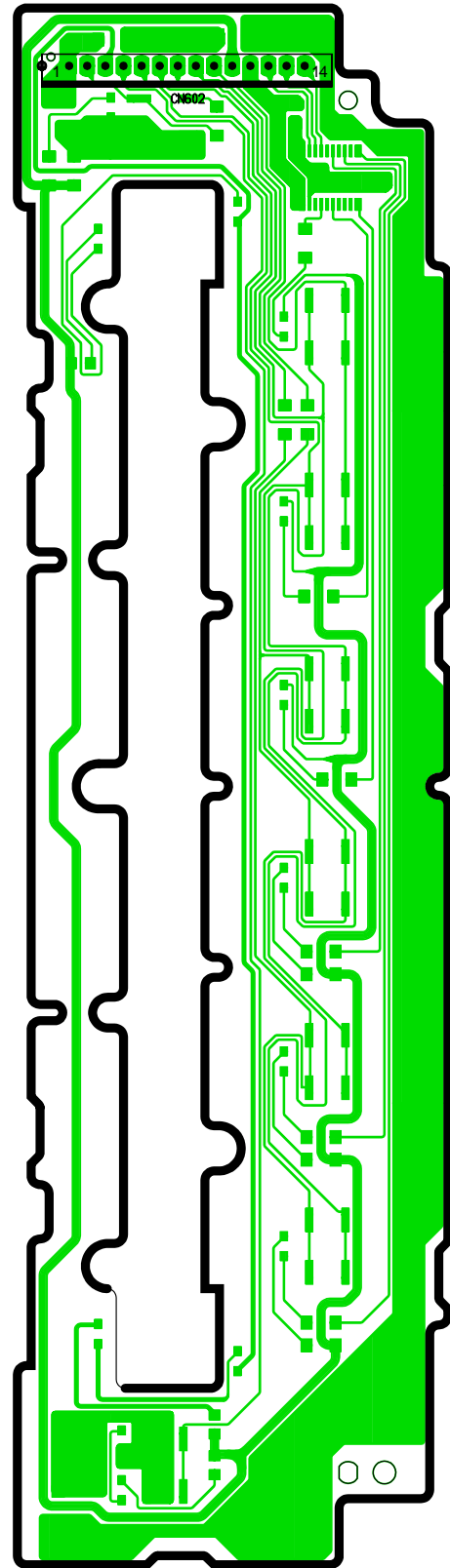
[E-9102][Bottom View]

CX-CA1270L POW

15.3. Display Block



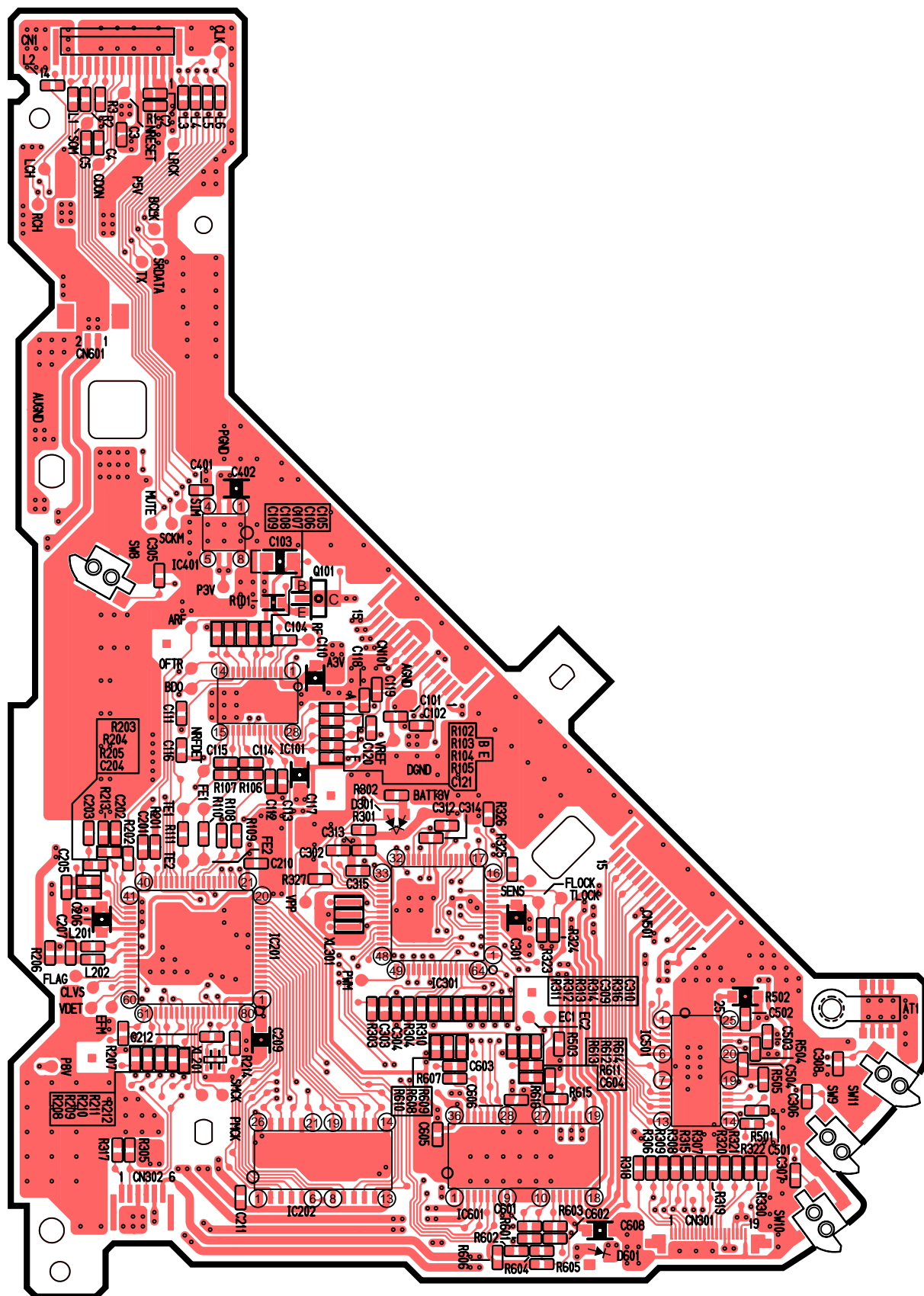
[E-9103][Top View]



[E-9103][Bottom View]

CX-CA1270L ESC

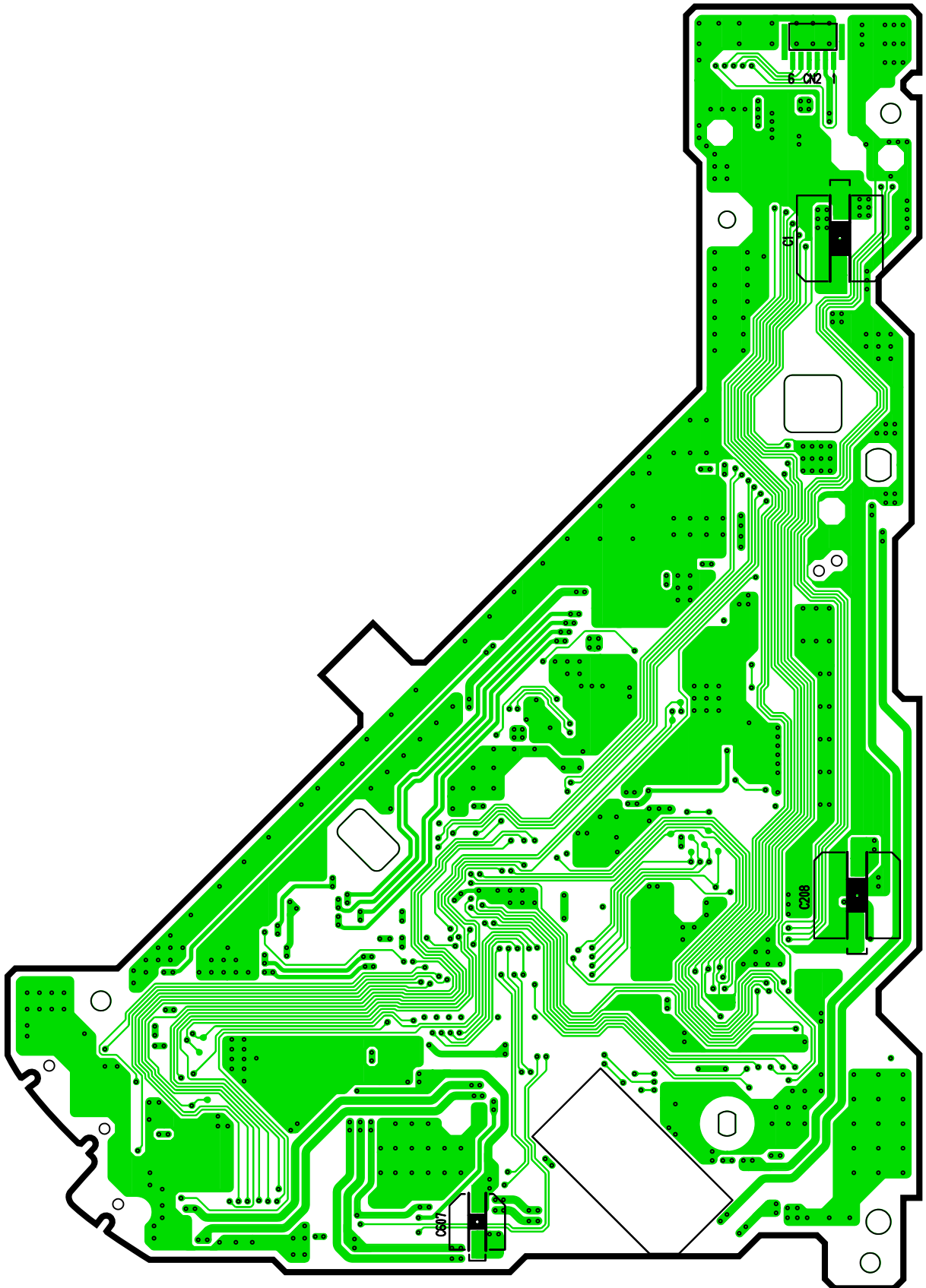
15.4. CD Servo Block (Top View)



[E-9060A] [Top View]

YGFD13192 DECK P.C.B

15.5. CD Servo Block (Bottom View)

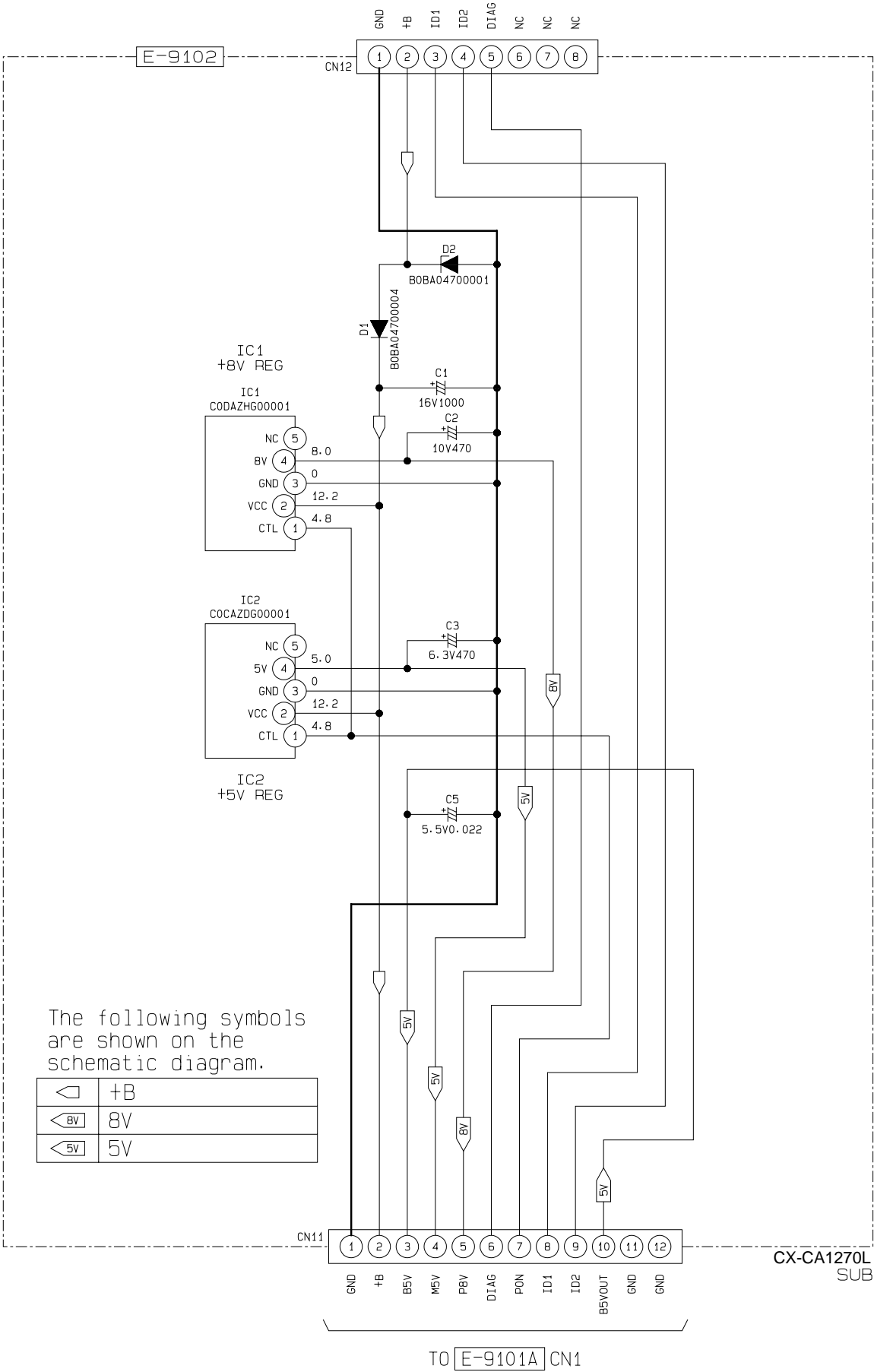


[E-9060A] [Bottom View]

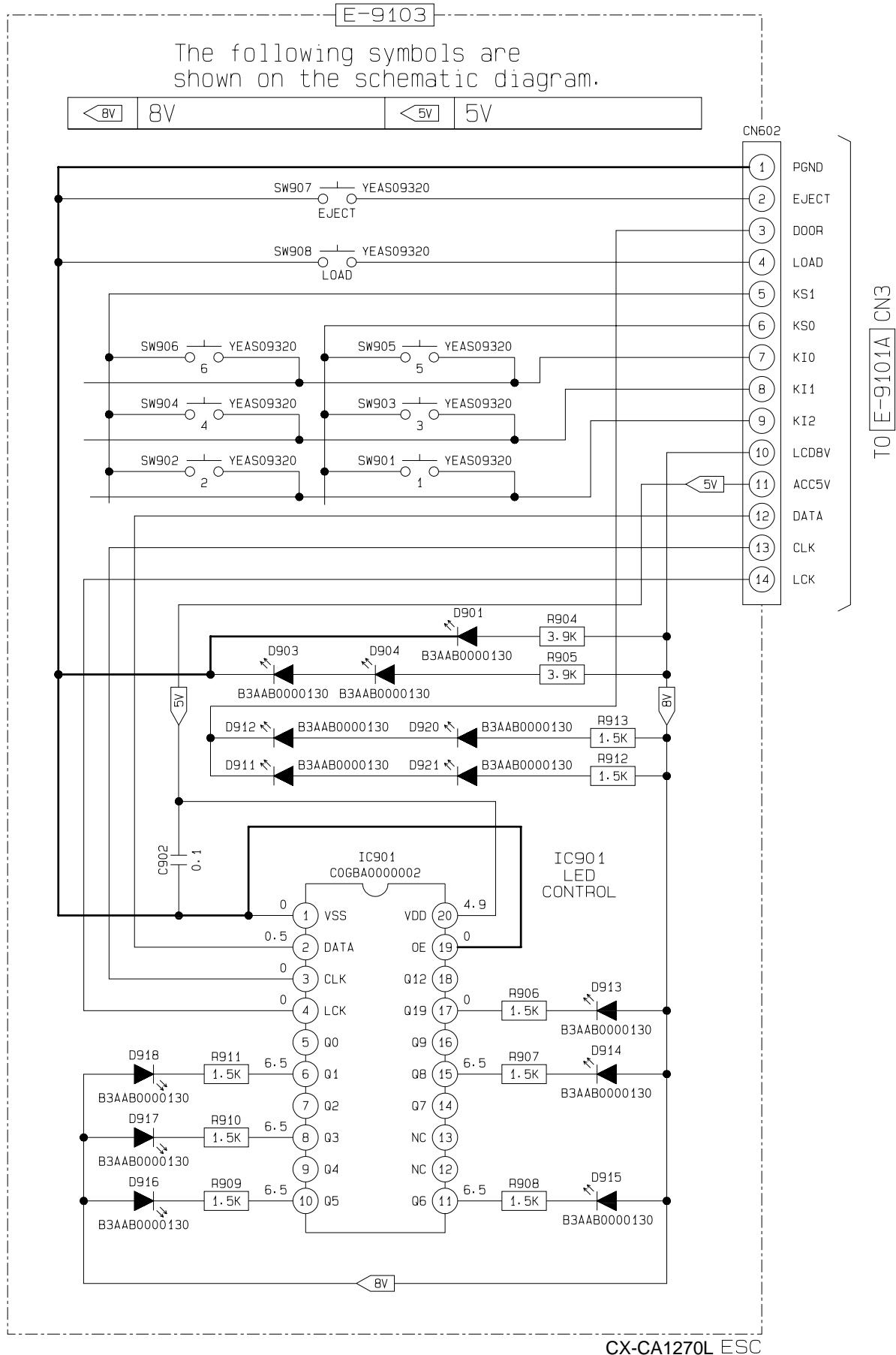
YGFD13192 DECK P.C.B

16 SCHEMATIC DIAGRAM-1

16.1. Power Block



16.2. Disply Block



**THIS PAGE IS JUST FOR
THE PAGE LAYOUT USE
ONLY.**



